

OSER Survey Data 2018



Amanda Holloway

Consortium for Ocean Leadership

15-16 November 2018

OSER Survey

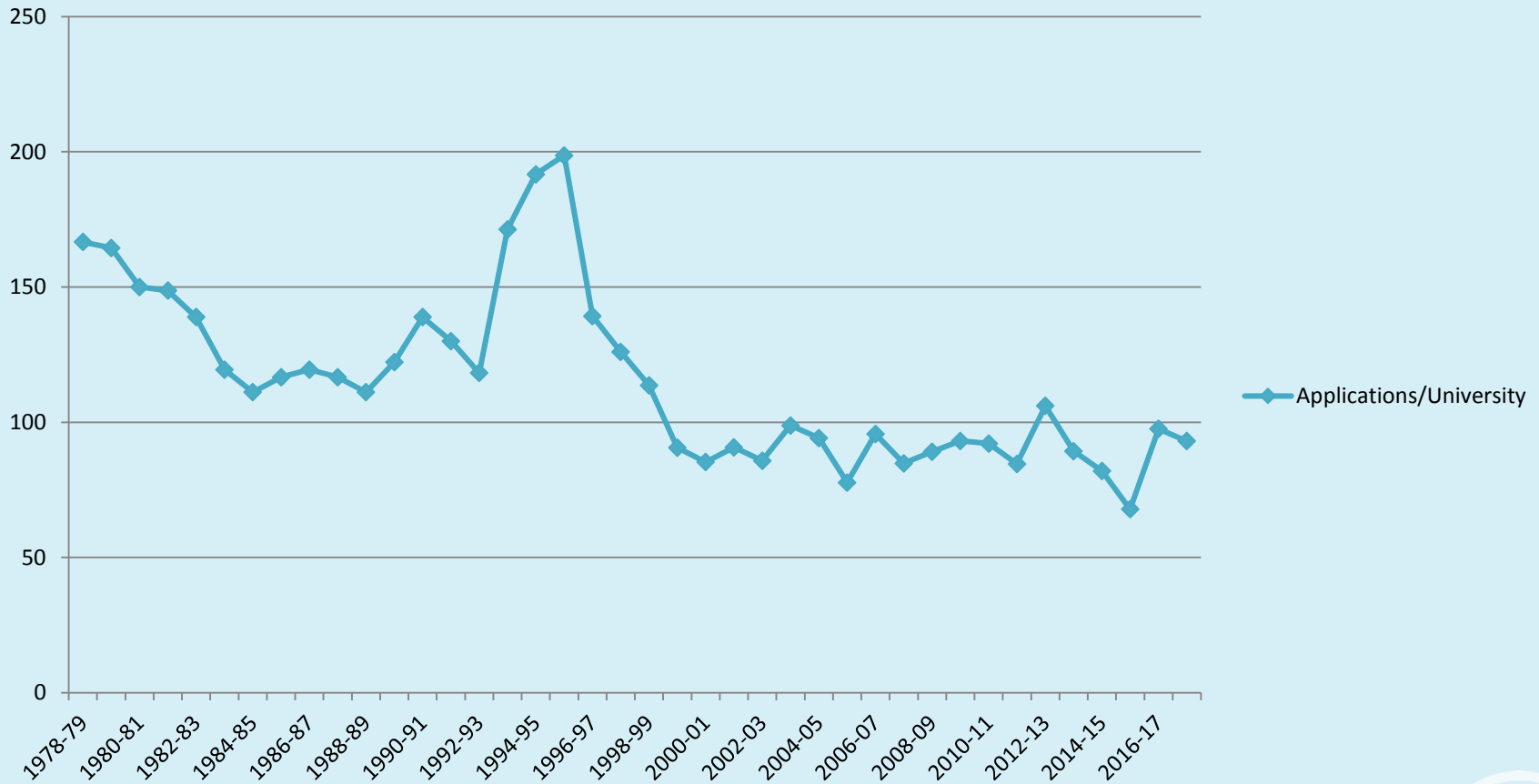
- First Data Gathering In 1978 Dating to 1975
- Over The Years Many Thanks to Charley Hollister, Arthur Nowell, Jake Pierson, John Farrington, Mel Briscoe, Henry Hope, Sue Cook, Allison Miller, Russ McDuff, Hans Vogelsong
- JOI -> 1994, CORE 1995-2007, COL 2007-Present
- Preservations, Scope and Format Inconsistent

Graduate Data – Applications

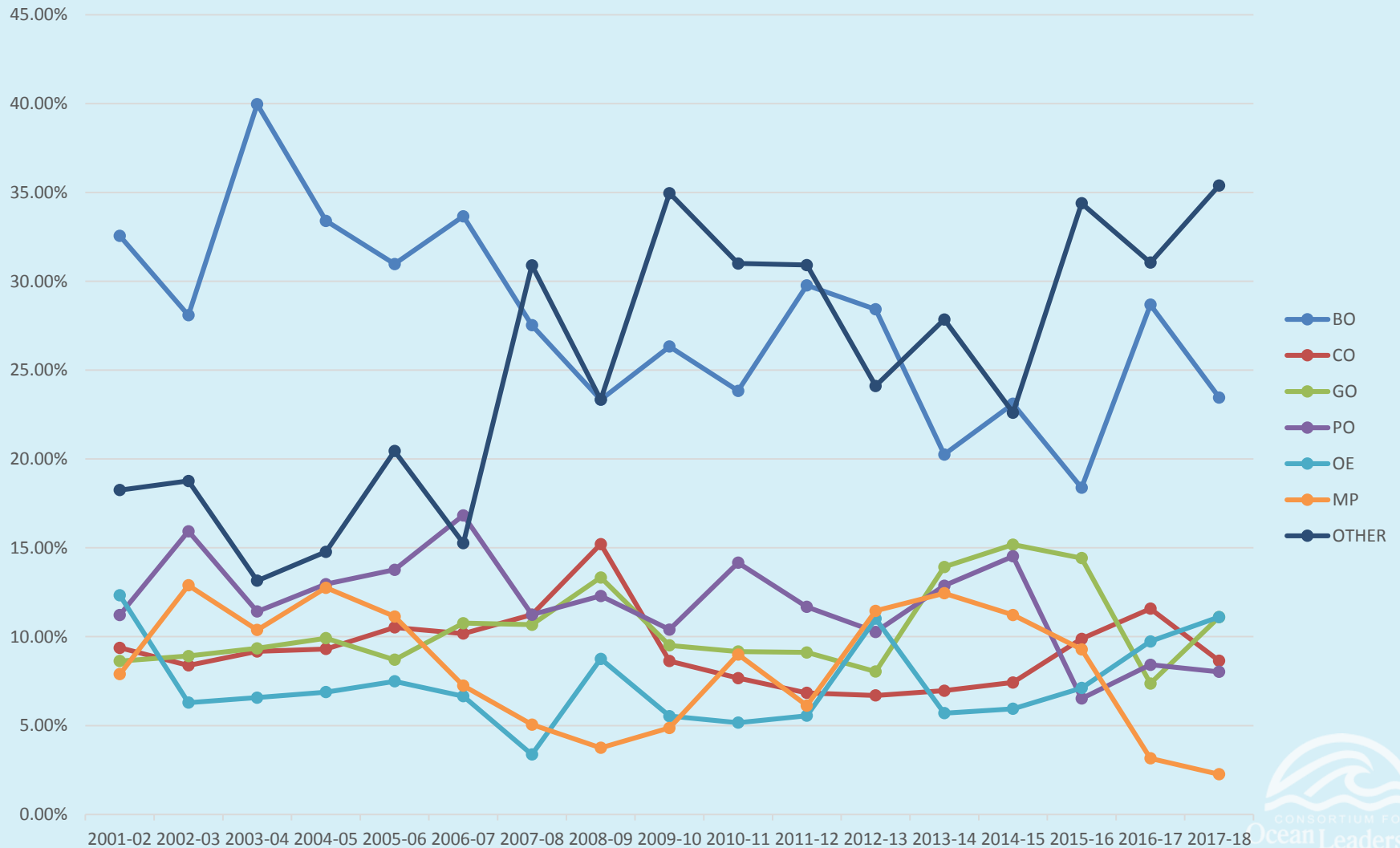
Year	BO	CO	GO	PO	OE	MP	Other
2007-08	33.91%	11.73%	12.18%	12.24%	4.27%	3.59%	21.90%
2008-09	30.42%	12.79%	12.91%	11.17%	4.71%	3.59%	24.41%
2009-10	25.22%	8.31%	9.71%	10.14%	6.05%	2.74%	41.05%
2010-11	29.34%	9.09%	12.39%	15.79%	4.94%	5.73%	22.72%
2011-12	32.75%	9.49%	9.32%	13.63%	5.88%	5.39%	23.54%
2012-13	32.36%	9.73%	11.28%	13.41%	6.75%	6.48%	19.98%
2013-14	28.48%	8.47%	9.93%	15.04%	5.08%	7.05%	25.94%
2014-15	25.25%	4.94%	18.56%	15.29%	5.34%	6.30%	21.03%
2015-16	21.23%	7.65%	23.30%	10.20%	6.57%	2.59%	28.47%
2016-17	30.44%	8.90%	8.58%	13.17%	10.47%	2.05%	26.39%
2017-18	31.90%	9.11%	9.50%	9.16%	8.04%	2.06%	30.22%

Graduate Data – Applications

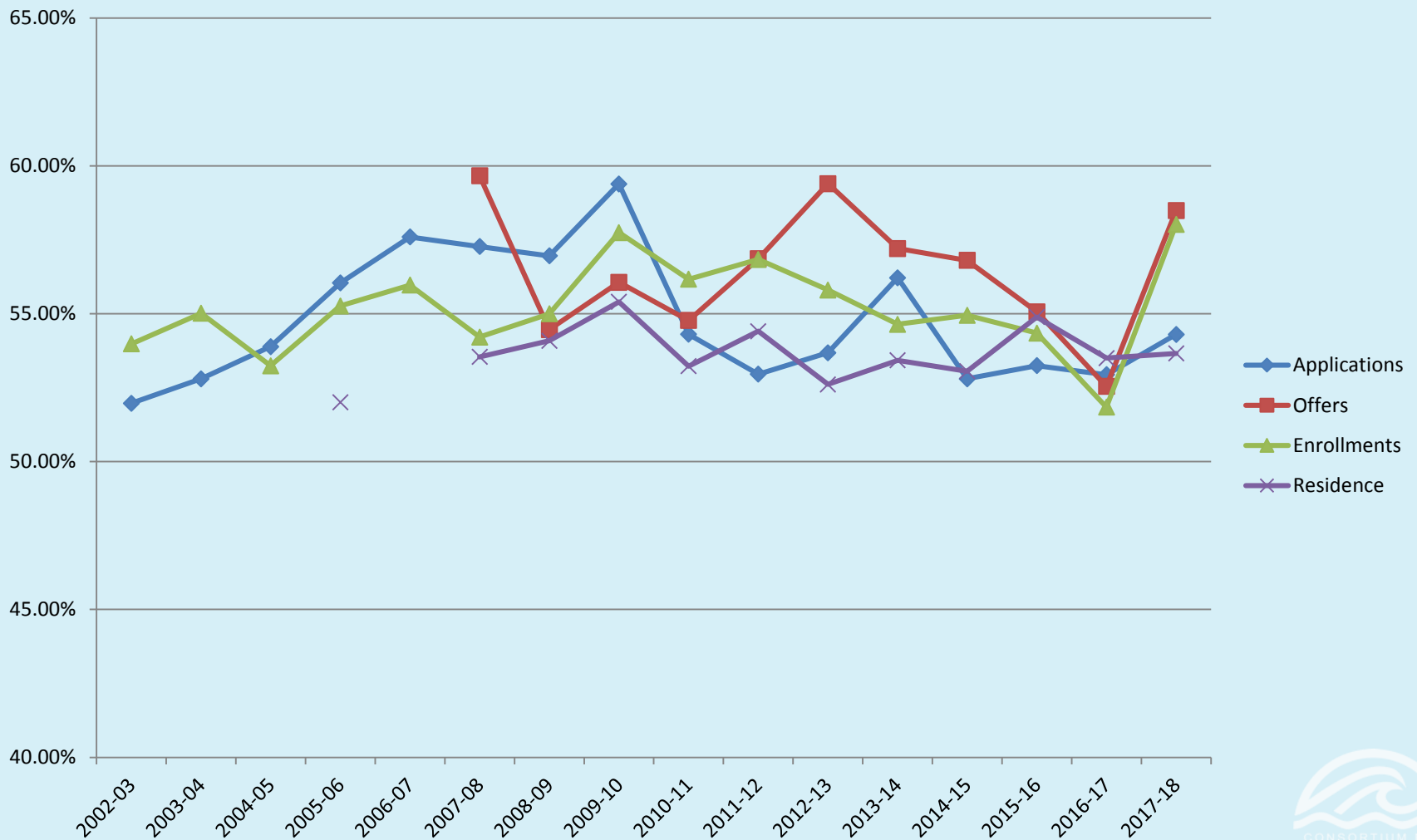
Applications/University



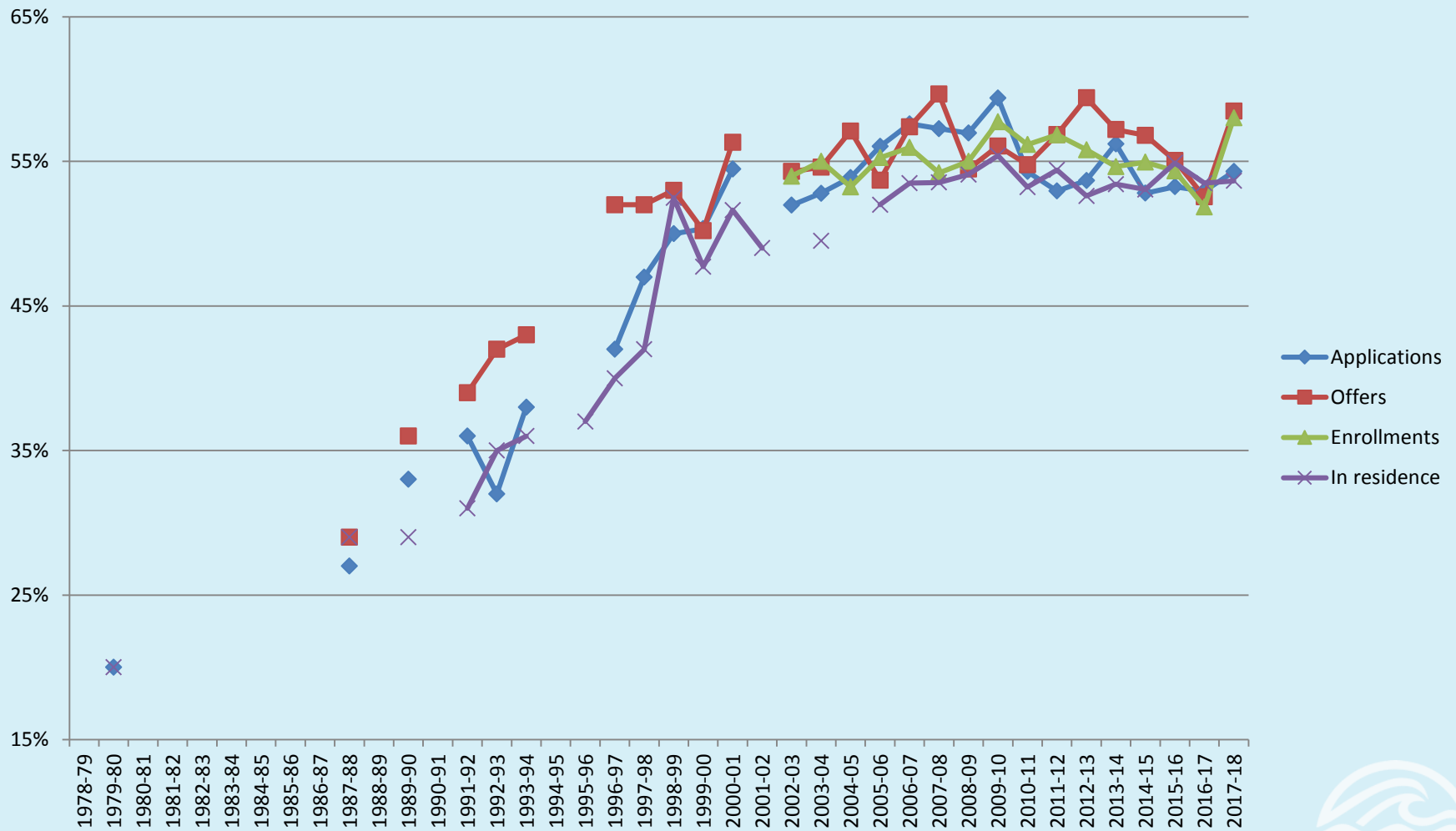
Graduate Data – Enrollments



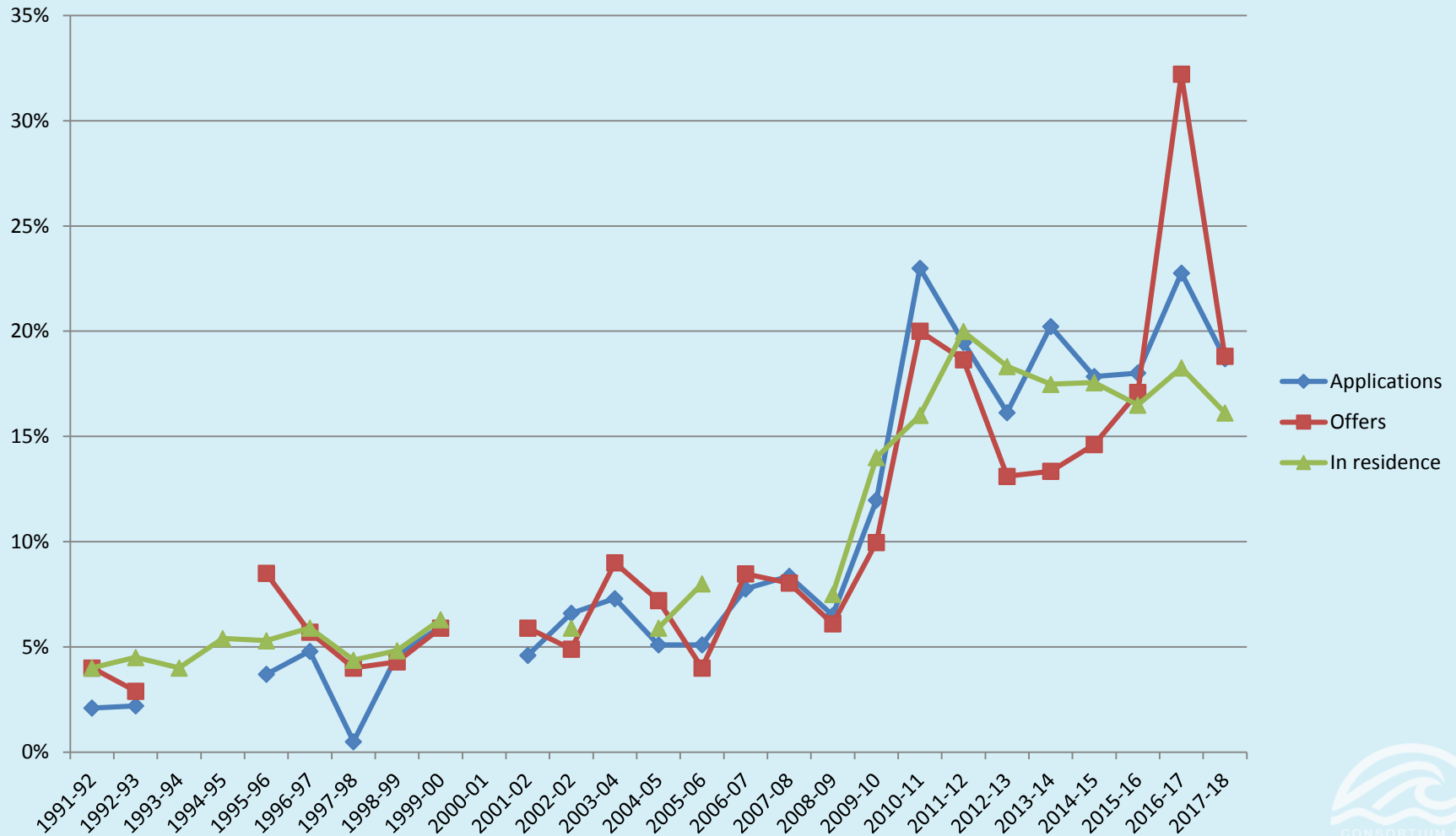
Graduate Data – Percentage of Women



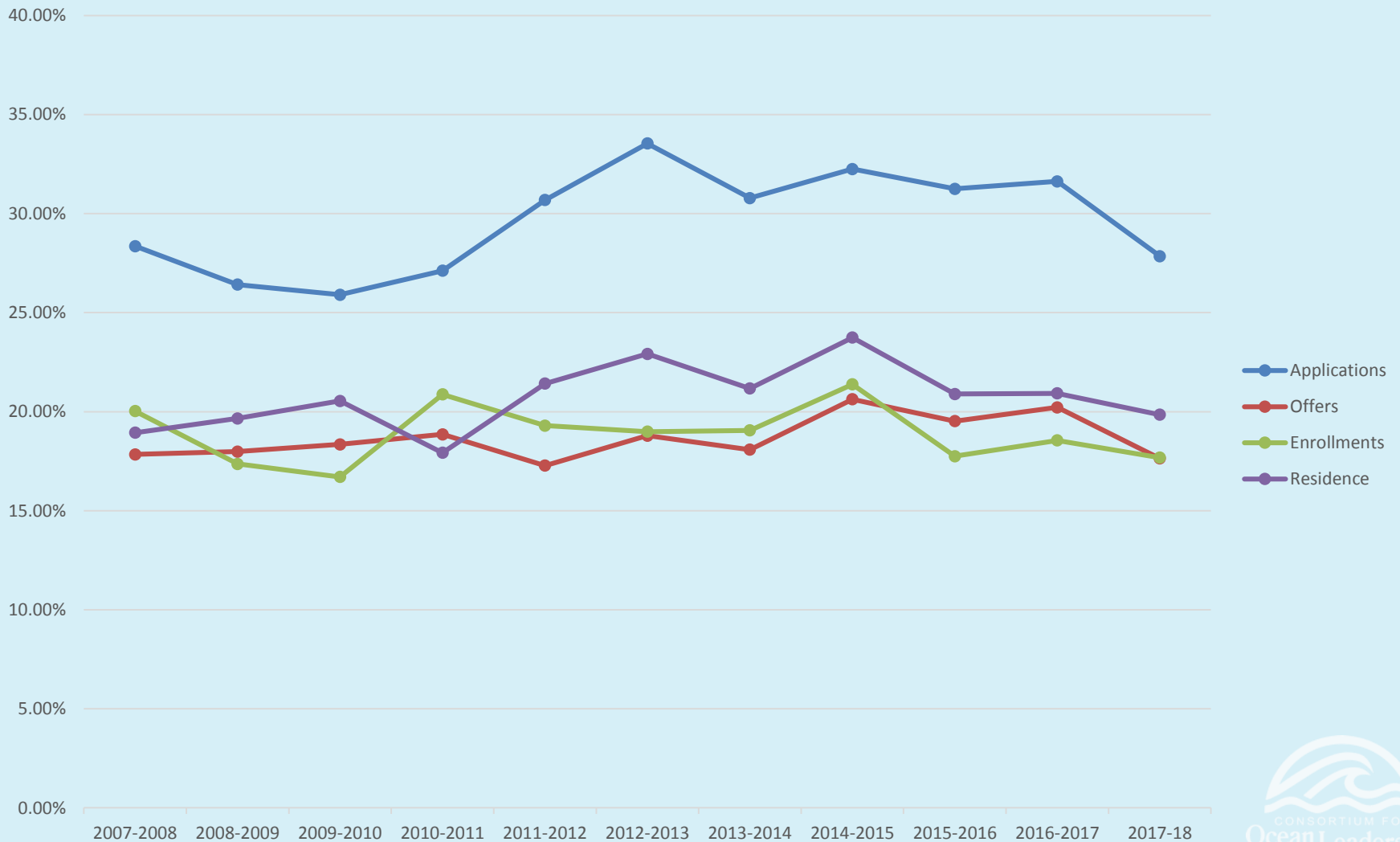
Graduate Data – Percentage of Women



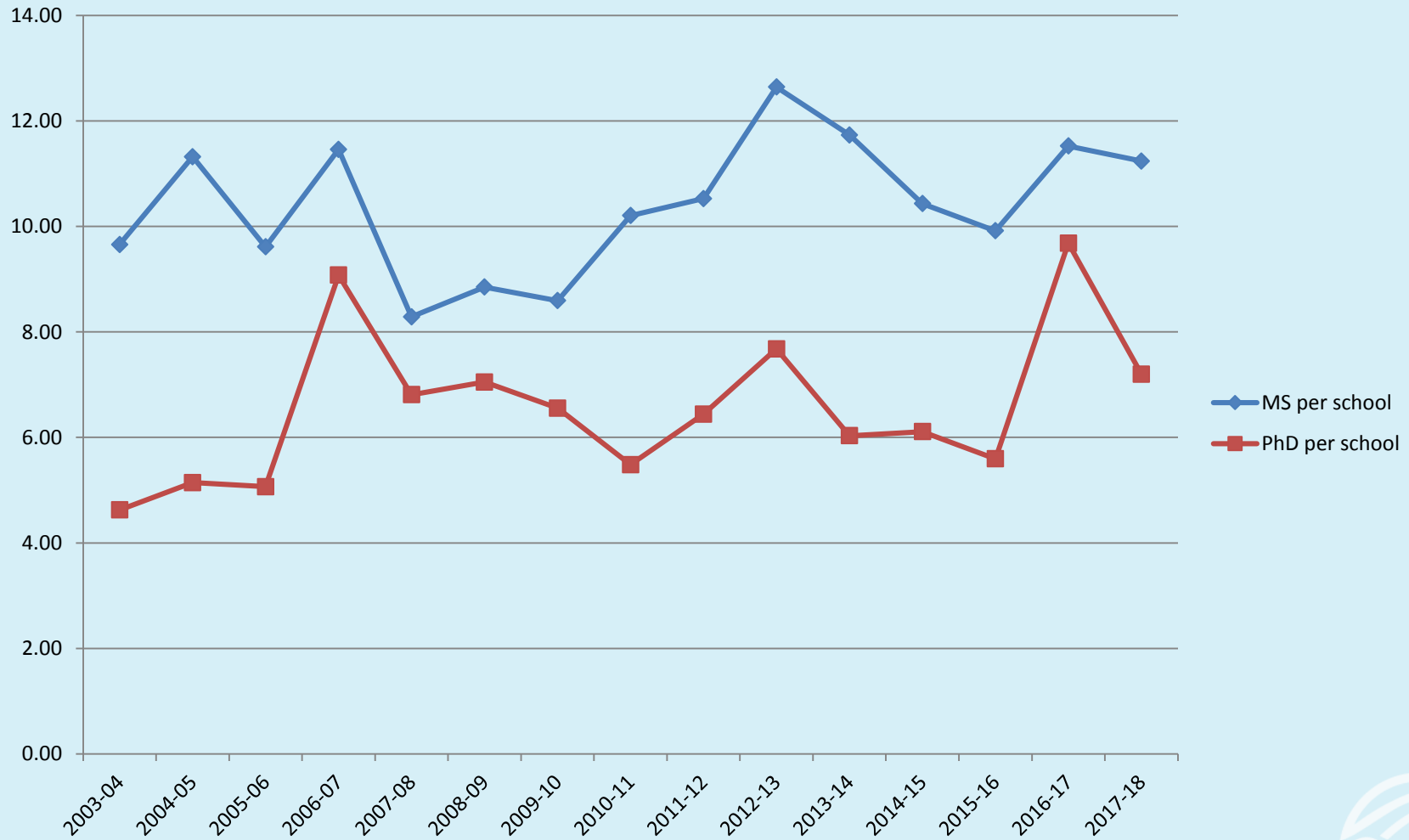
Graduate Data – Minorities



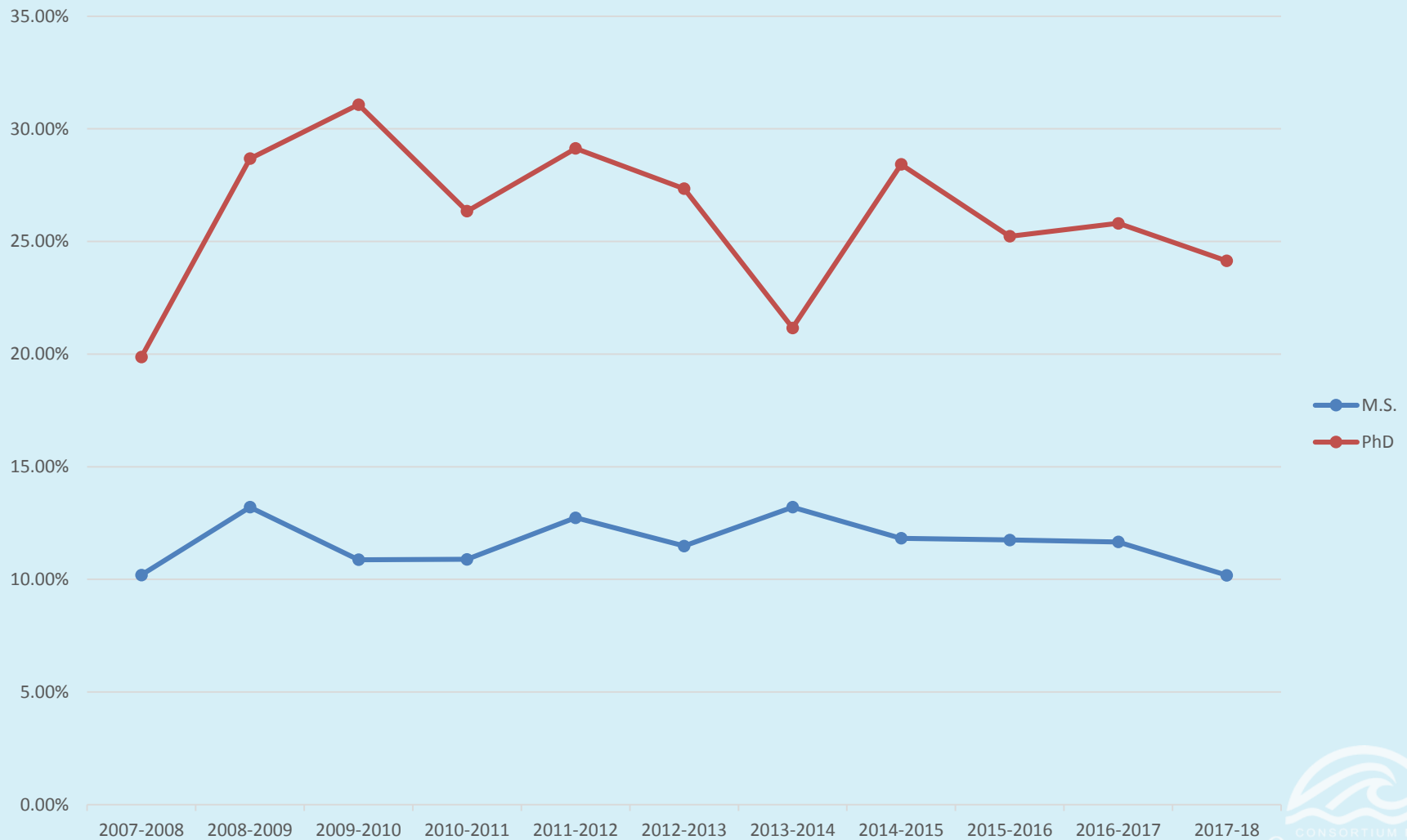
Graduate Data – Foreign Nationals



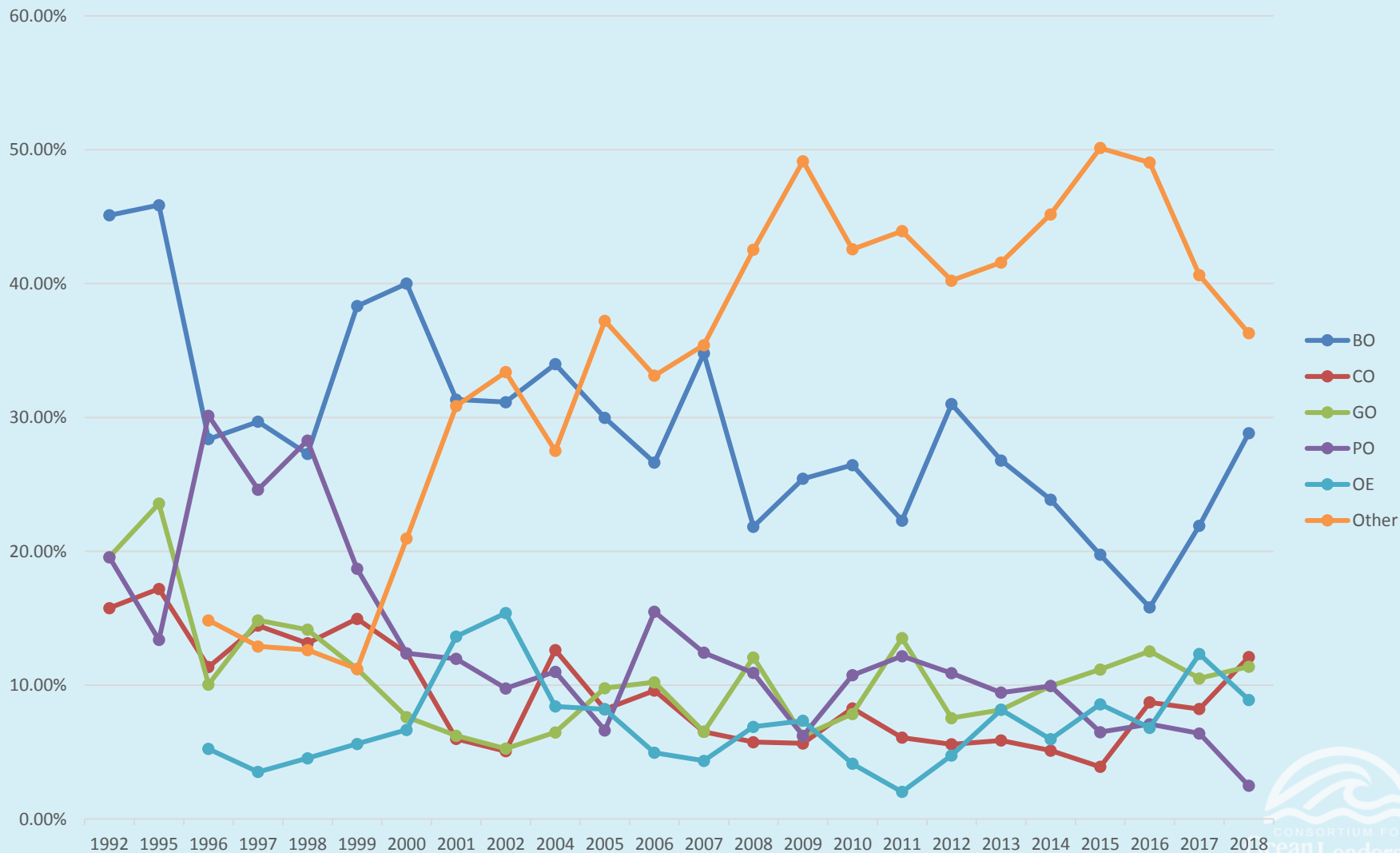
Graduate Data – Degrees Awarded



Graduate Data – Foreign Nationals

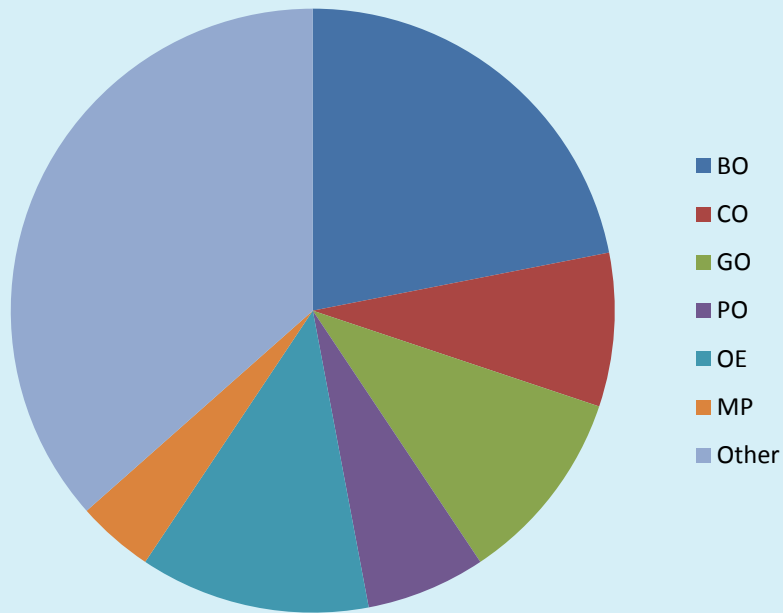


Graduate Data – Masters Awarded

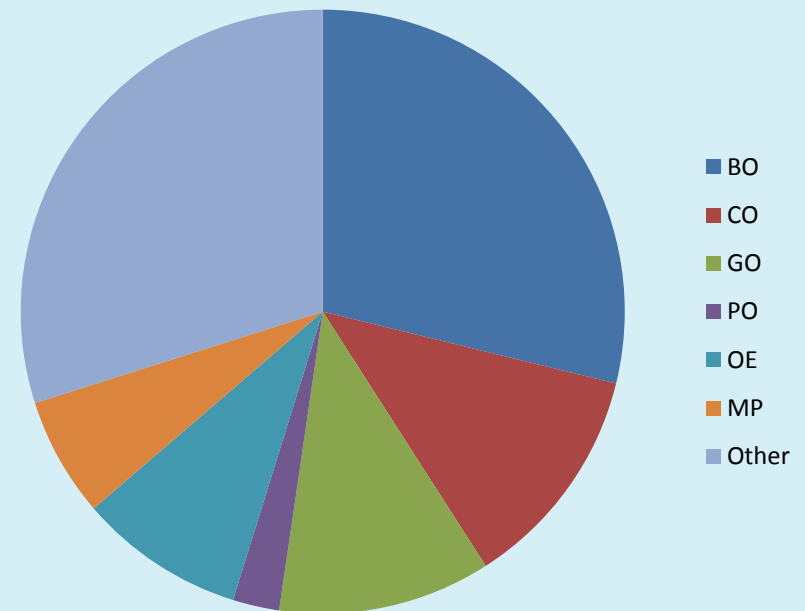


Graduate Data – Masters Awarded

2016-17 Masters

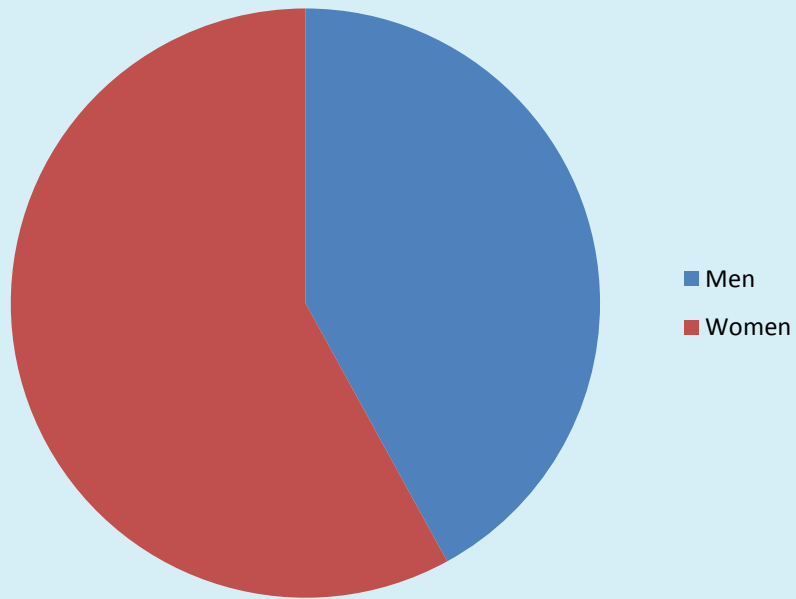


2017-18 Masters

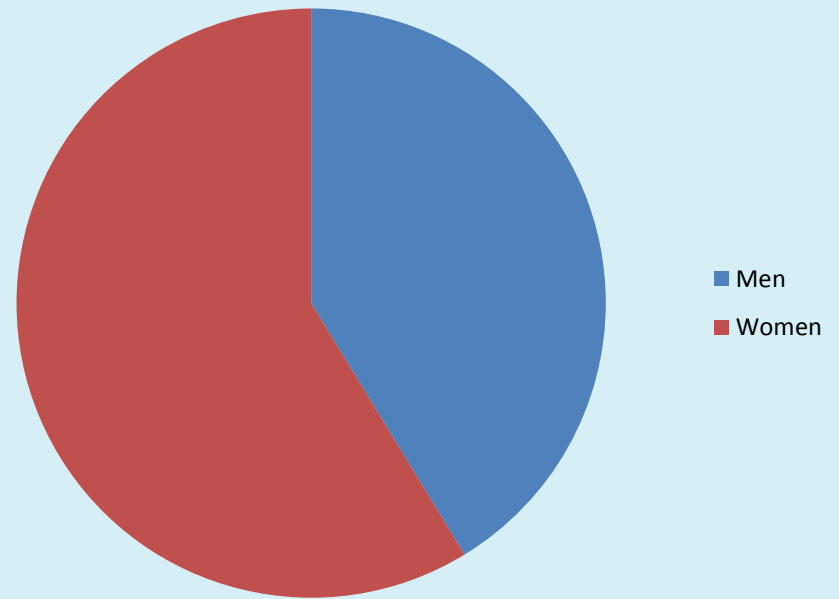


Graduate Data – Masters Awarded

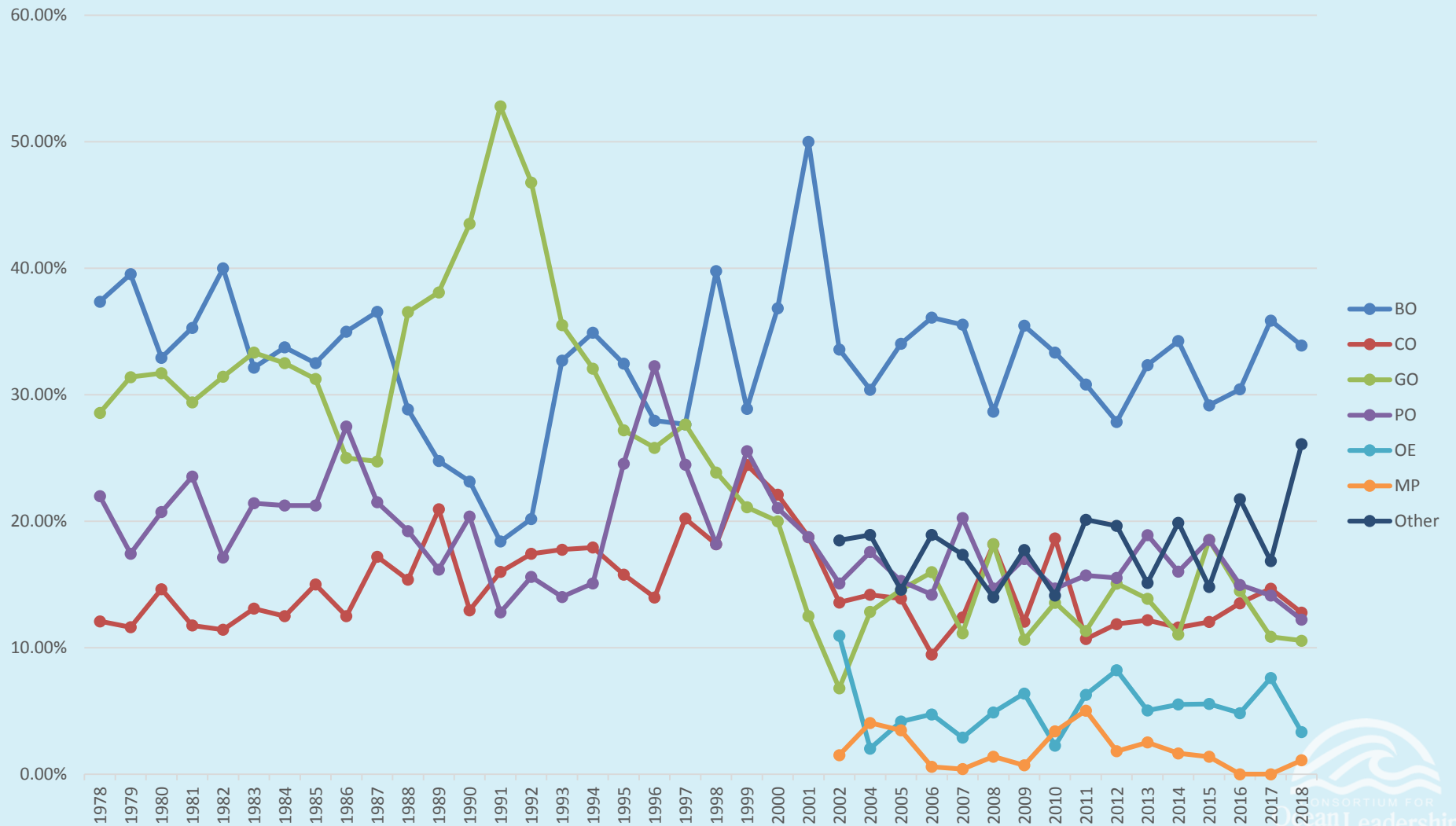
2016-17 Masters



2017-18 Masters

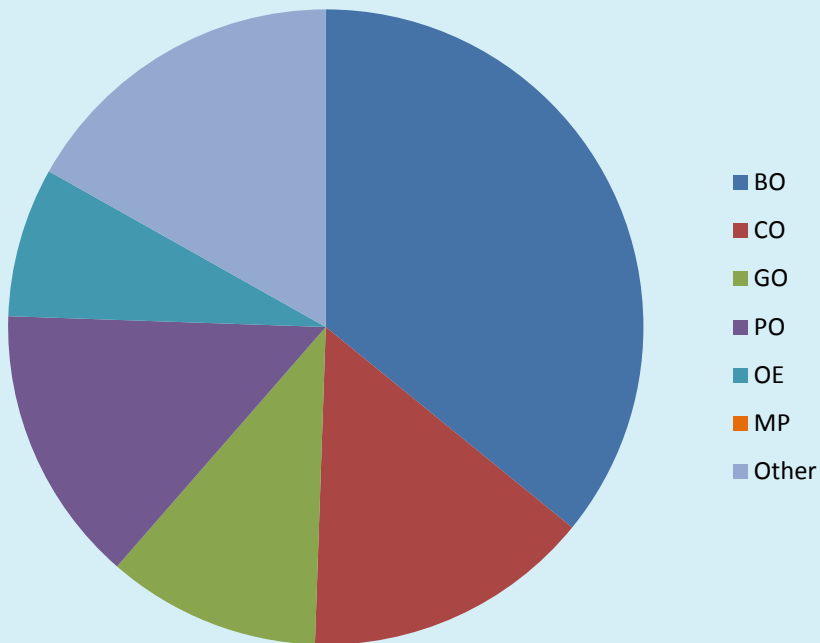


Graduate Data – PhDs Awarded

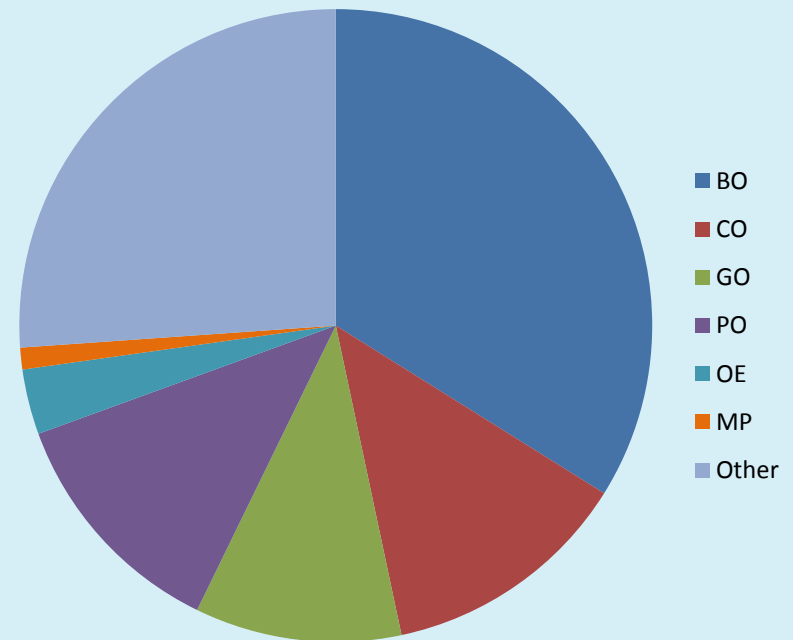


Graduate Data – PhDs Awarded

2016-17 PhDs

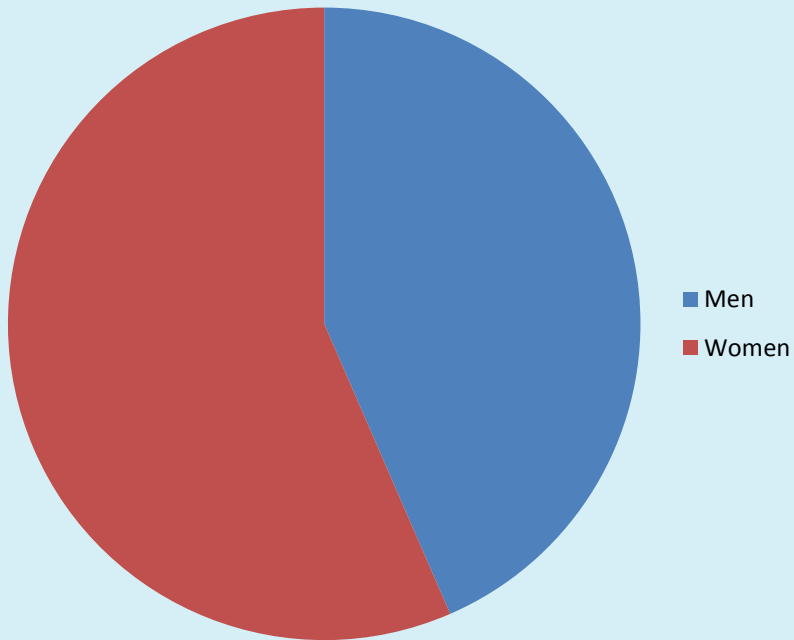


2017-18 PhDs

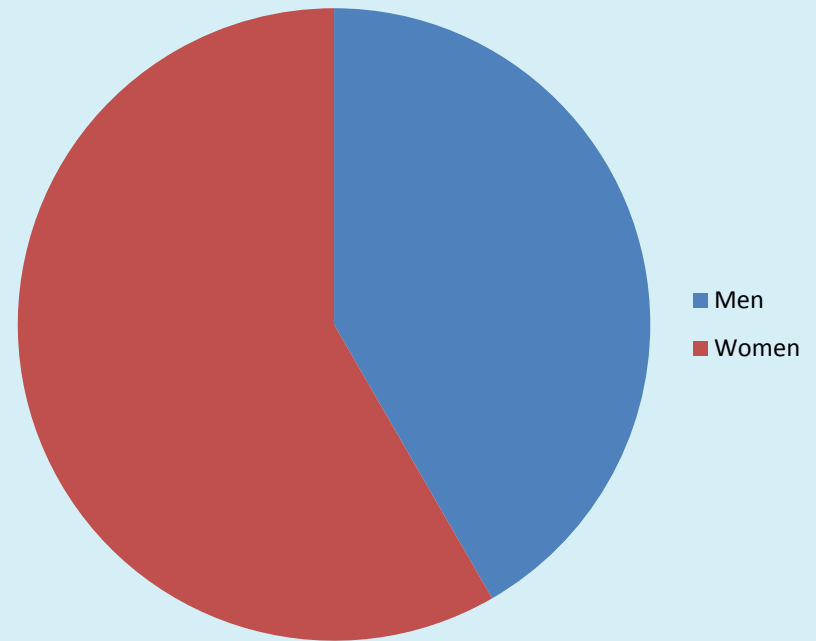


Graduate Data – PhDs Awarded

2016-17 PhDs

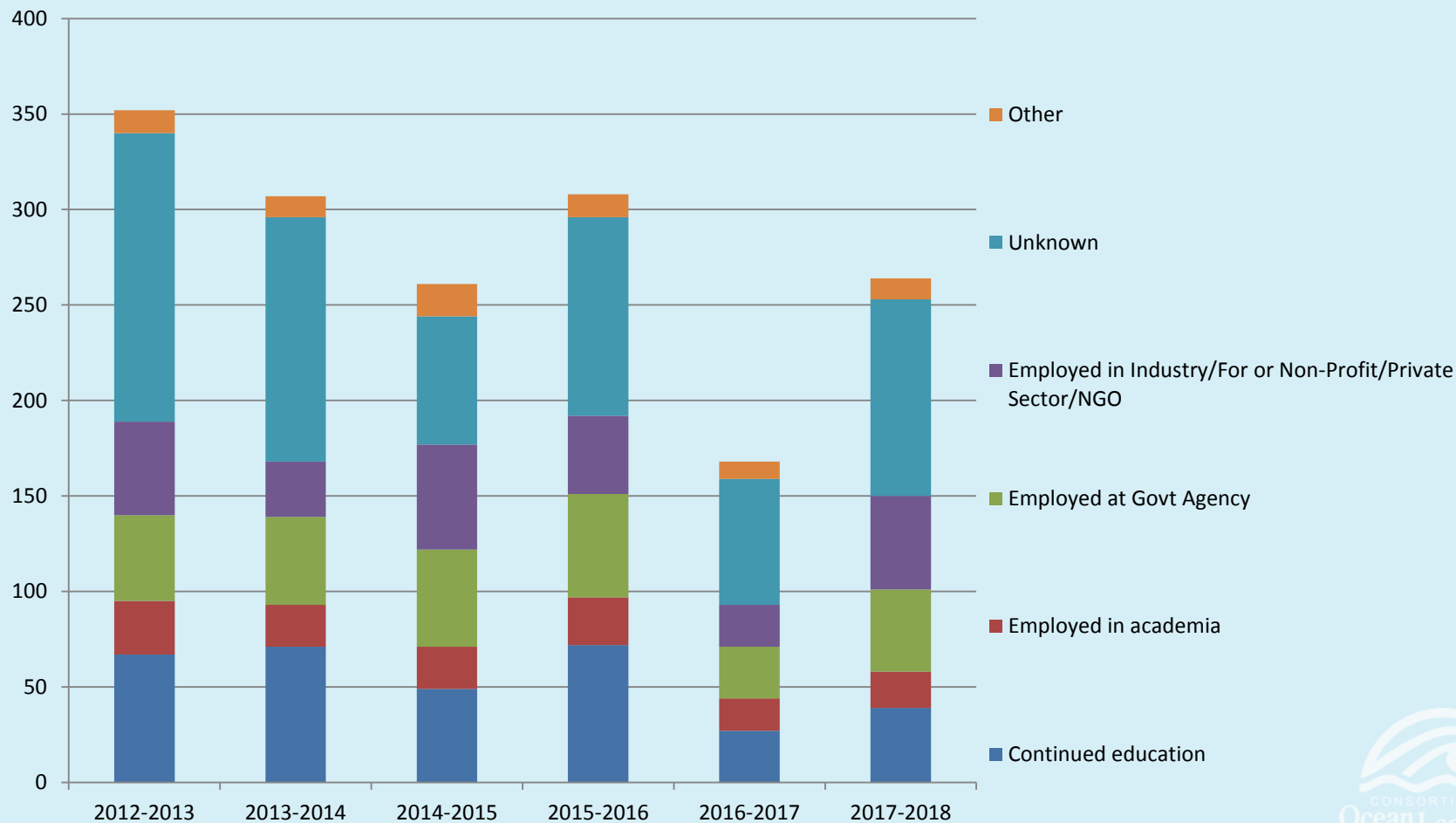


2017-18 PhDs



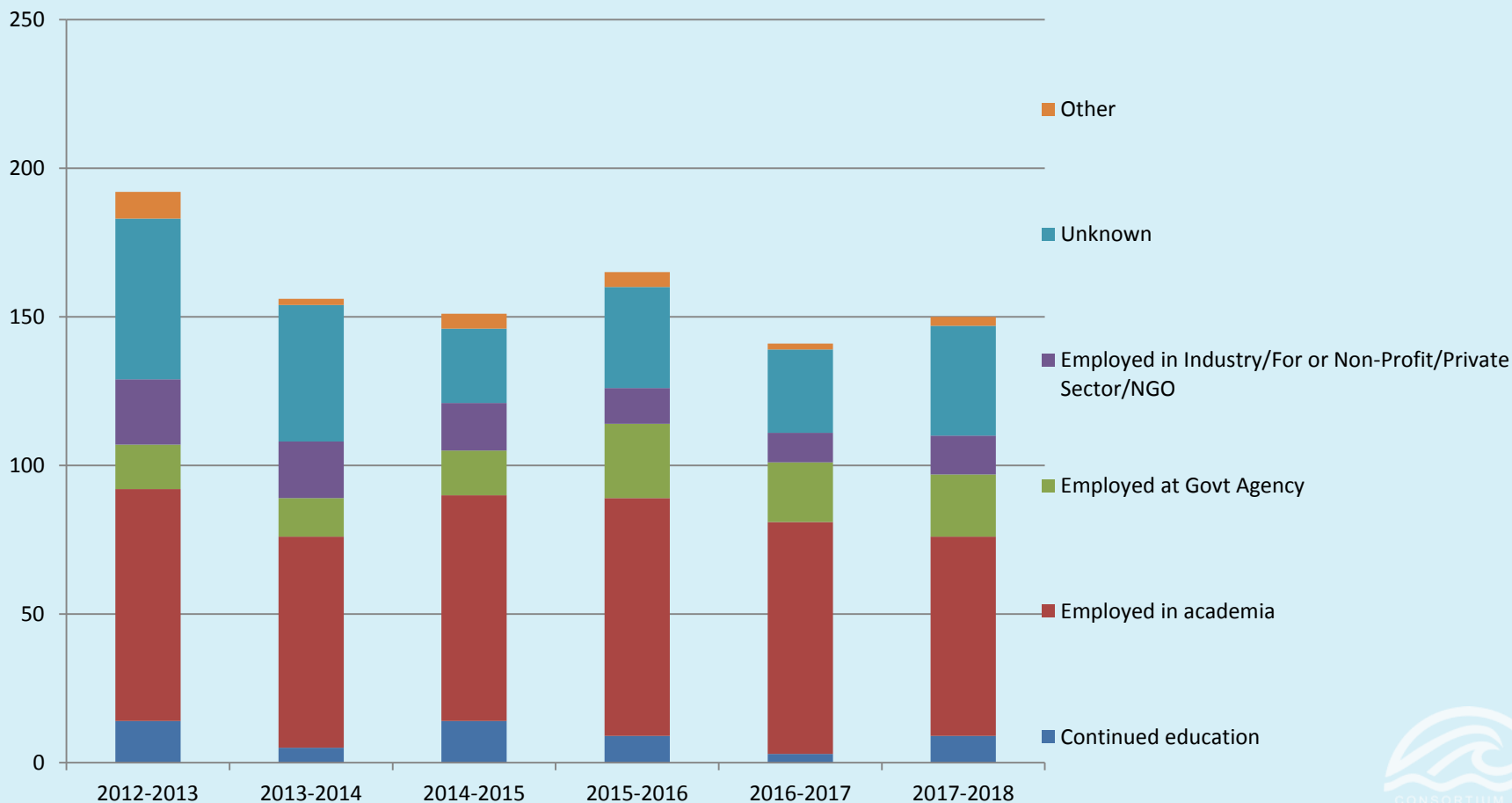
Graduate Data – Employment

US Citizen Masters recipients



Graduate Data – Employment

US Citizen PhD recipients



IPEDS Reporting

- **Core Marine Disciplines**
 - Ocean Engineering (14.2401)
 - Marine Biology and Biological Oceanography (26.1302)
 - Marine Sciences (30.3201)
 - Oceanography, Chemical and Physical (40.0607)
- **Related Marine Disciplines**
 - Aquaculture (01.0303)
 - **Fishing and Fisheries Sciences and Management (03.0301)**
 - Wildlife, Fish and Wildlands Science and Management (03.0601)
 - **Water, Wetlands, and Marine Resources Management (03.0205)**
 - Ecology (26.1301)
 - Aquatic Biology/Limnology (26.1304)
 - Hydrology and Water Resources Science (40.0605)
 - Geophysics and Seismology (40.0603)
 - Marine Science/Merchant Marine Officer (49.0309)
 - Operational Oceanography (29.0306)
 - Maritime Studies (30.2901)
 - Geological and Earth Sciences/Geosciences, Other (40.0699)
 - **Atmospheric Sciences and Meteorology, General (40.0401)**
 - **Multi-/Interdisciplinary Studies, Other (30.9999)**

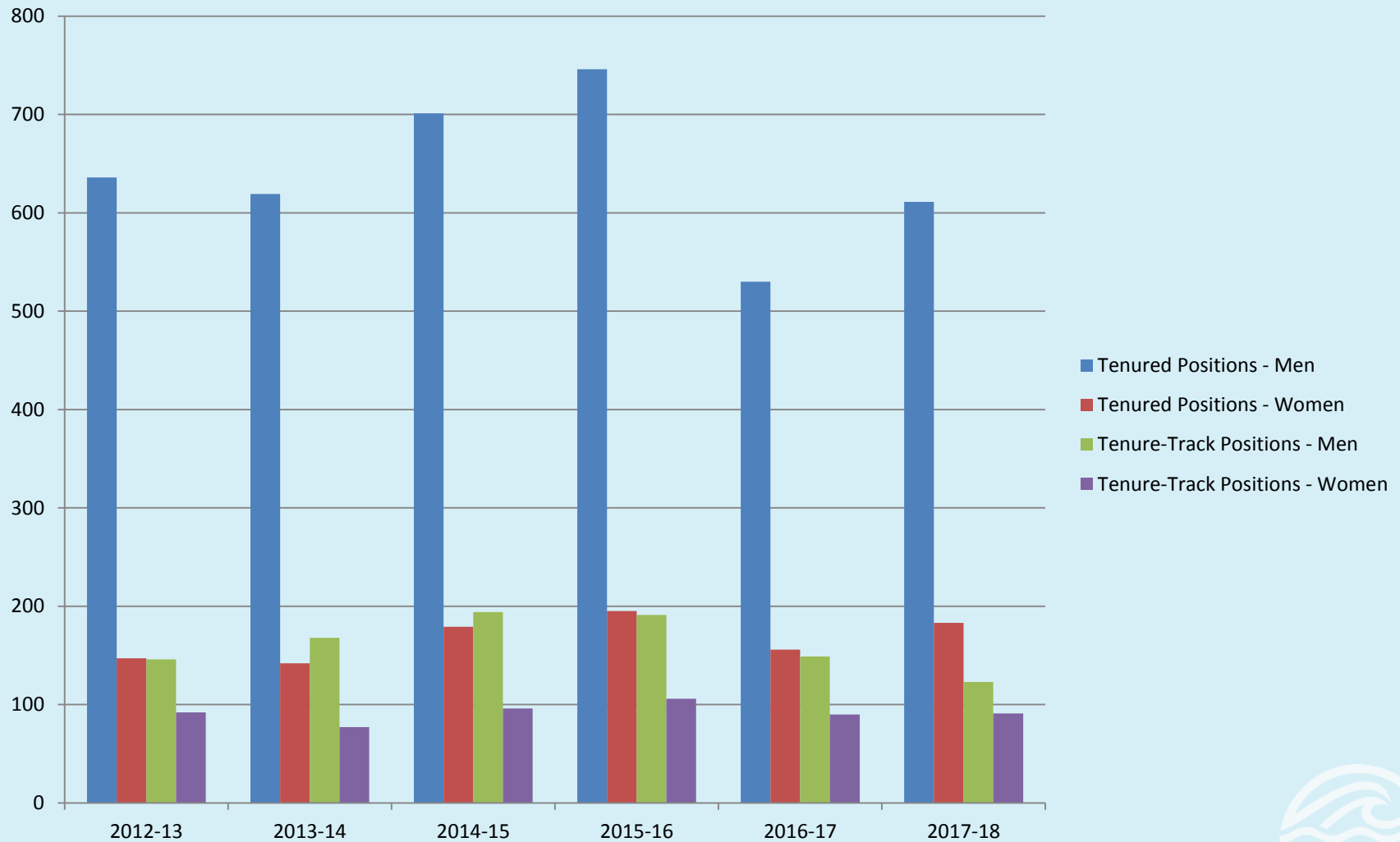
Graduate Data

Marine Bio		Marine Chem		Marine Geo		PhysO		OE		Marine Pol		Other	
Code	#	Code	#	Code	#	Code	#	Code	#	Code	#	Code	#
40.0607	3	40.0607	4	40.0607	3	40.0607	4	14.2401	1	30.3201	1	40.0607	3
30.3201	2	30.3201	2	30.3201	3	30.3201	2	26.1302	1	26.1302	1	30.3201	4
26.1302	5	26.1302	1	26.1302	2	26.1302	2	3.0205	1	3.0205	1	26.1302	1
3.0205	1	3.0205	1	3.0205	1	3.0205	1					3.0205	1
												3.0301	2
												30.9999	1
												40.0401	1

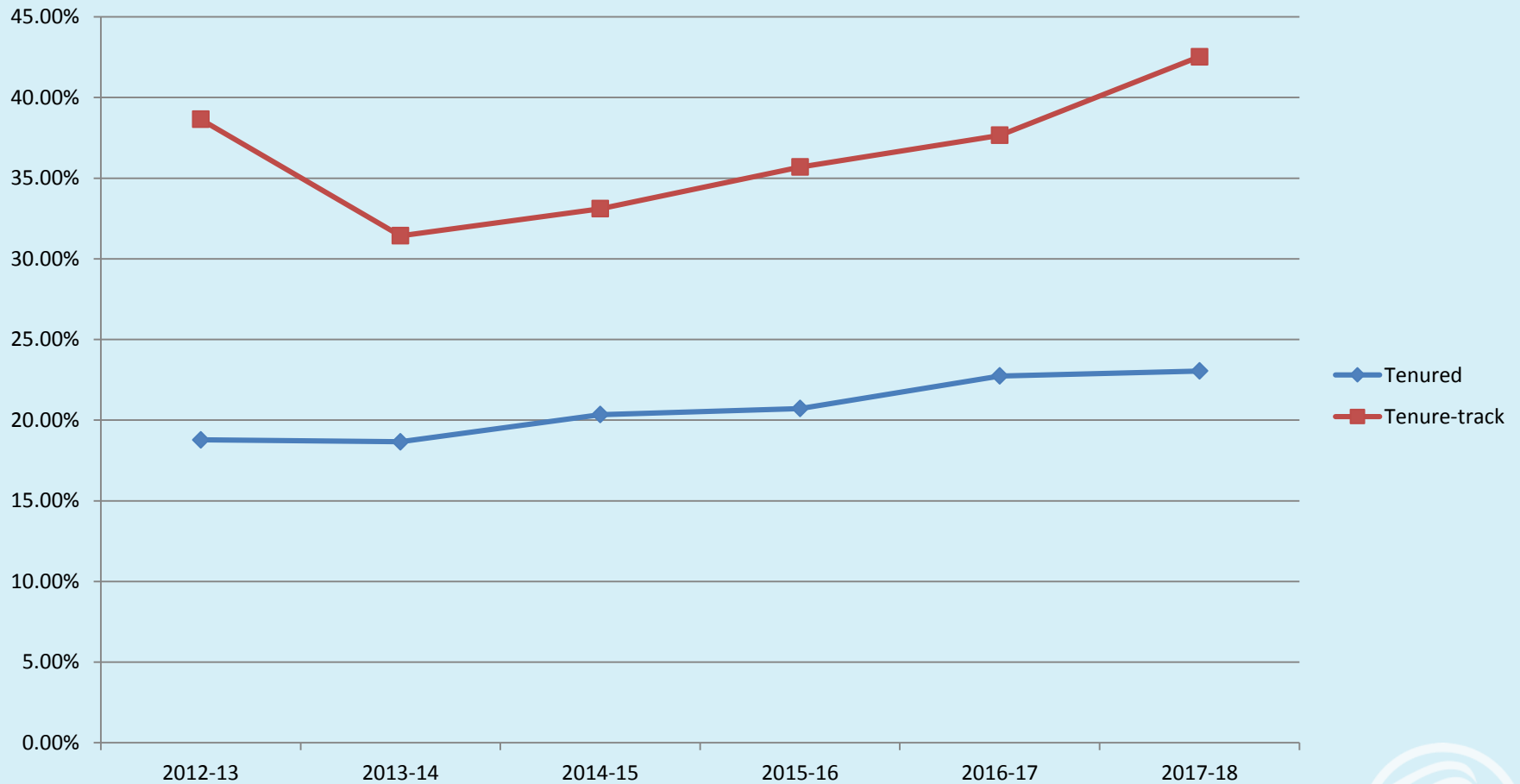
Faculty Data

- Parallel survey of faculty to graduate student results
- Time series presented based on responses from varied responding units
 - 2008 – 34
 - 2009 – 18
 - 2010 – 18
 - 2011 – 31
 - 2012 – 29
 - 2013 – 30
 - 2014 – 22
 - 2015 – 33
 - 2016 – 43
 - 2017 – 20
 - 2018 – 25

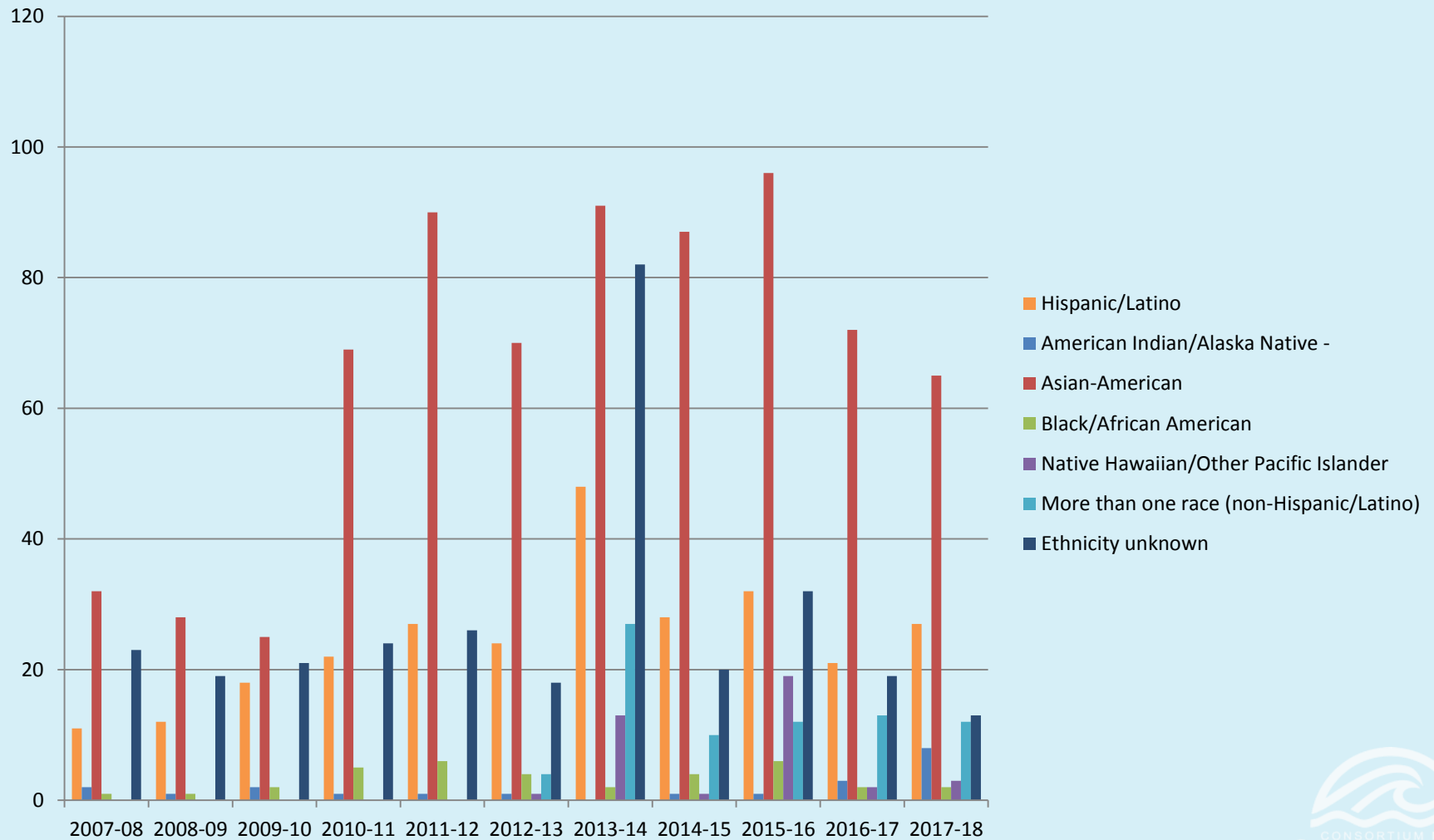
Faculty Data – Tenure & Tenure Track



Faculty Data – Percentage of Women

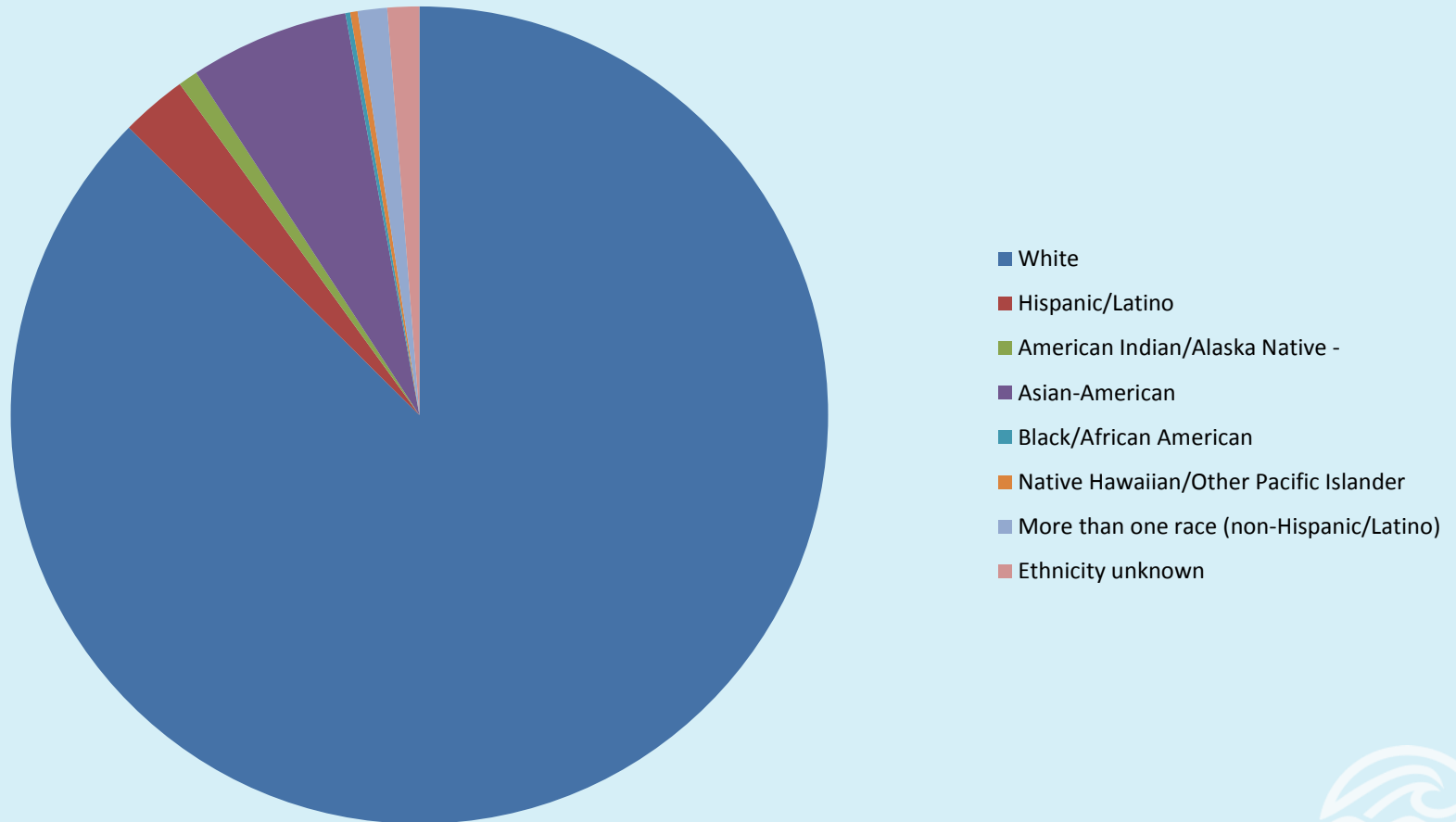


Faculty Data



Faculty Data

2017-18



Questions?

