

LEGEND

Candidate Mooring Site Locations

- Original
- Pre-Micrositing Meeting
- Micrositing Meeting (Buoy Line Alternative)
- Micrositing Meeting (47.13N Alternative)

Science Siting Requirements

- ▨ Inshore Depth Zone
- ▭ Inshore Nav Marker Buffer
- ▭ Inshore Siting Circle
- ▭ Study Area for Siting of Inshore Mooring
- 47.13N Line
- ▭ US Navy Warning Area W237-A
- Olympic Coast NMS Boundary

Note: Depths in Fathoms

Source: NOAA Navigational Chart 18500: Columbia River to Destruction Island (May 2008)

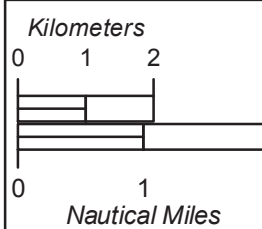
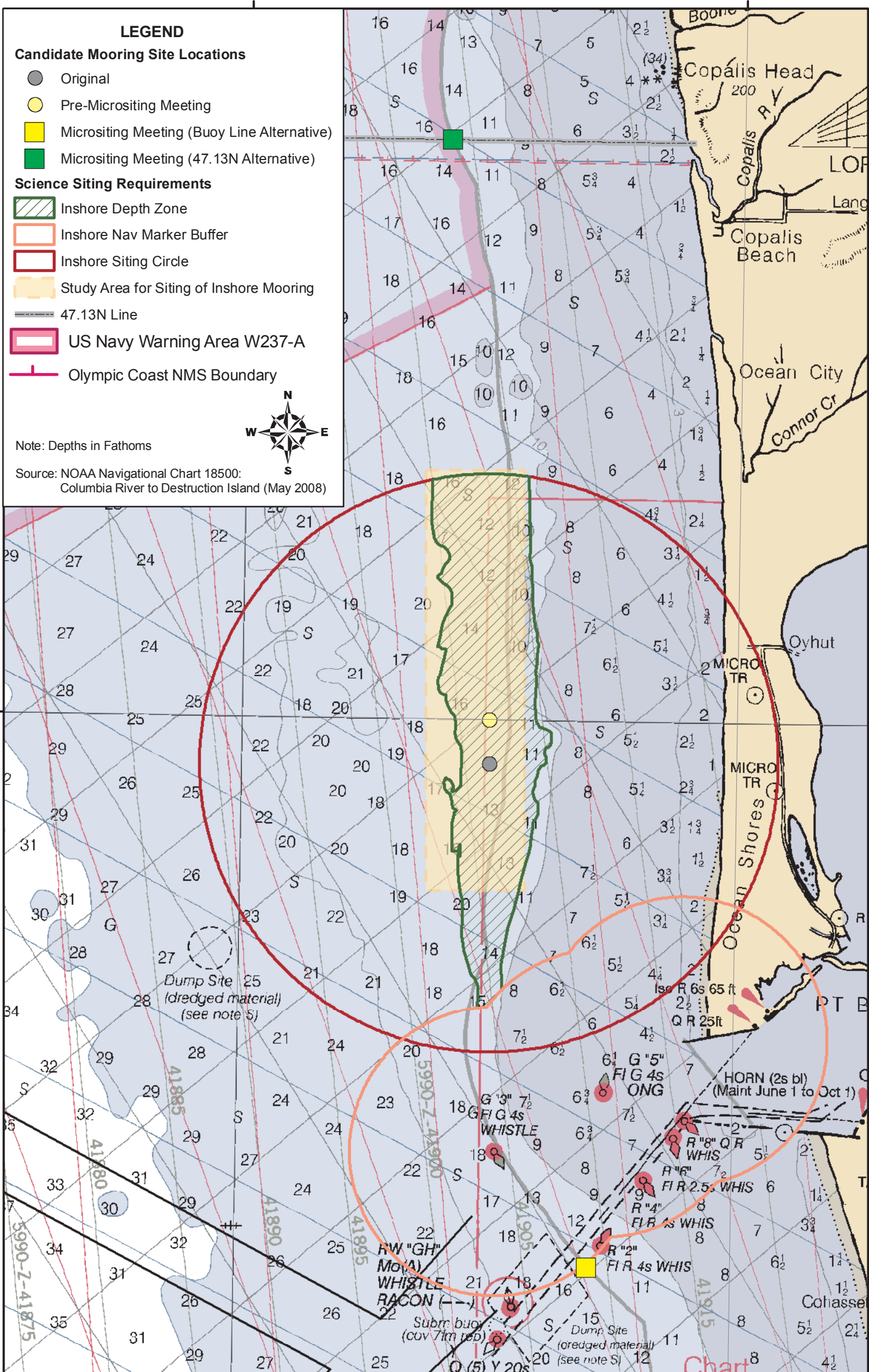


Figure 2-5a.1 (Modified Nov 17th, 2010)
 Endurance Array (Grays Harbor Line) Candidate Inshore Mooring Site
 and Study Area for Potential Inshore Mooring