

OSER Survey Data 2016



Amanda Holloway

Consortium for Ocean Leadership

5-6 October 2016

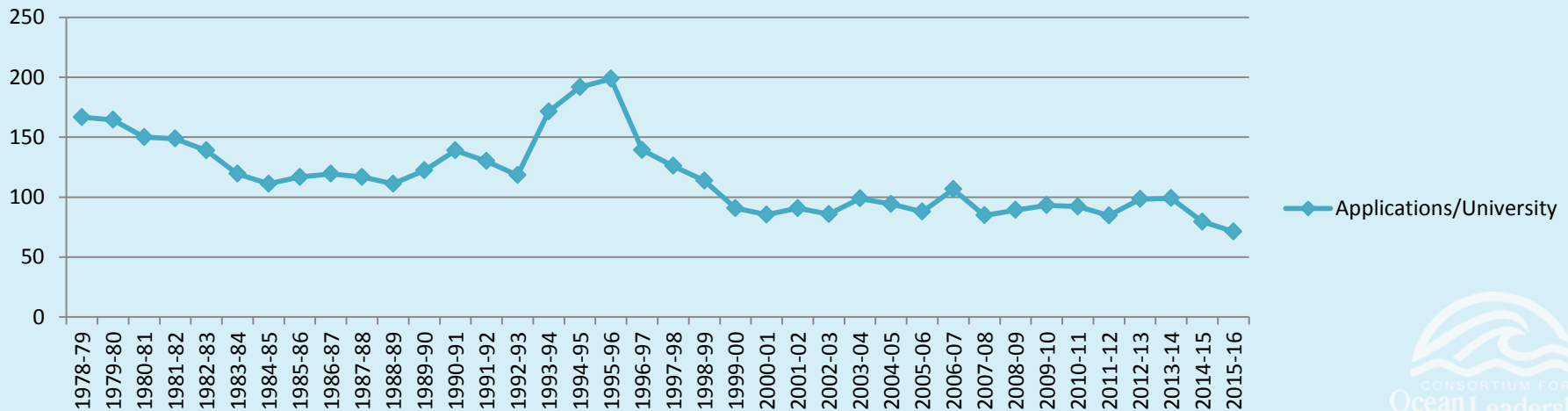
OSER Survey

- First Data Gathering In 1978 Dating to 1975
- Over The Years Many Thanks to Charley Hollister, Arthur Nowell, Jake Pierson, John Farrington, Mel Briscoe, Henry Hope, Sue Cook, Allison Miller, Russ McDuff, Hans Vogelsong
- JOI -> 1994, CORE 1995-2007, COL 2007-Present
- Preservations, Scope and Format Inconsistent

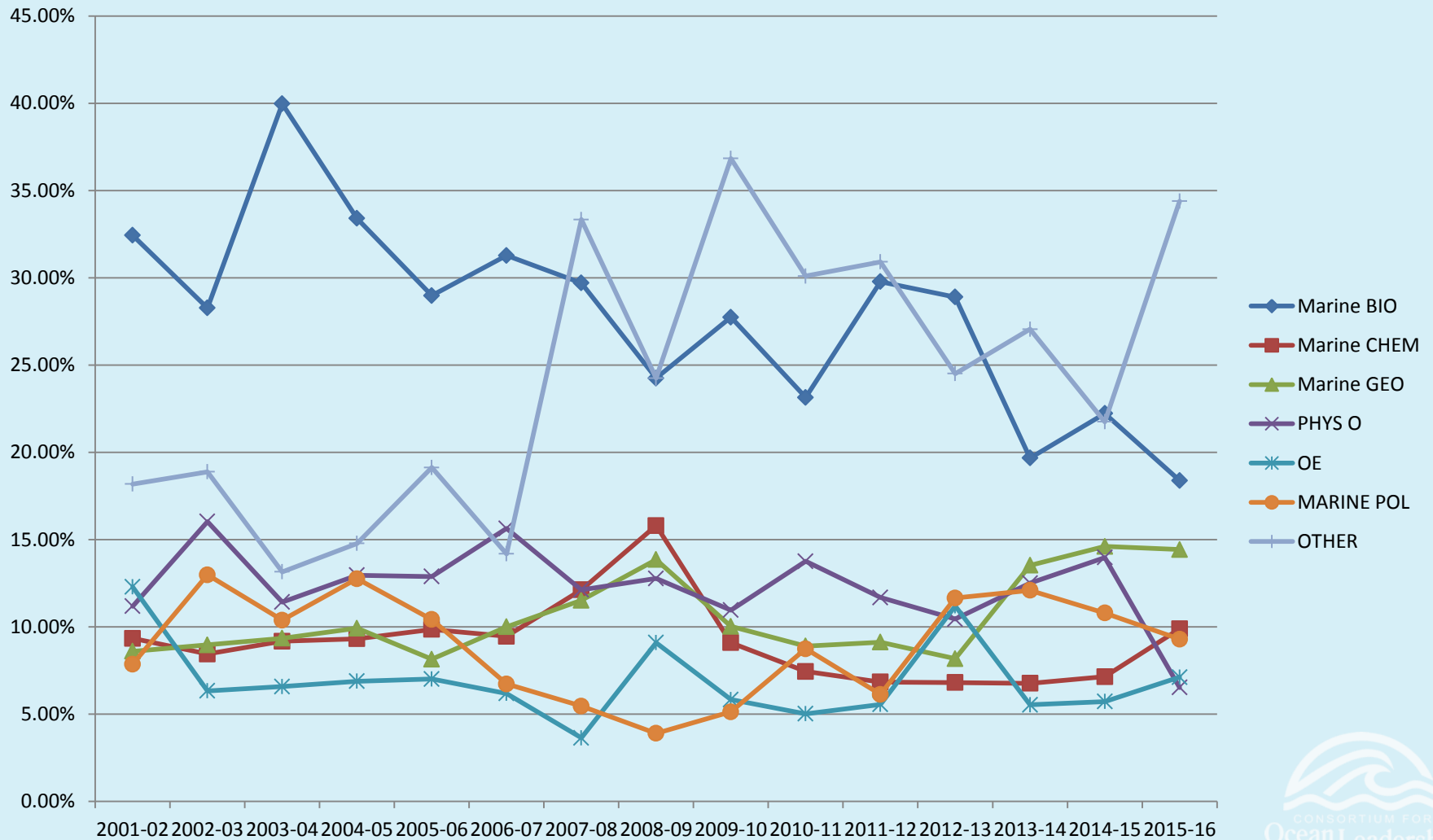
Graduate Data – Applications

Year	BO	GO	PO	CO	OE, MP + Other
2012-13	35%	12%	14%	10%	35.83%
2013-14	26%	9%	14%	8%	34.33%
2014-15	26%	19%	16%	5%	33.71%
2015-16	20%	22%	10%	7%	35.85%

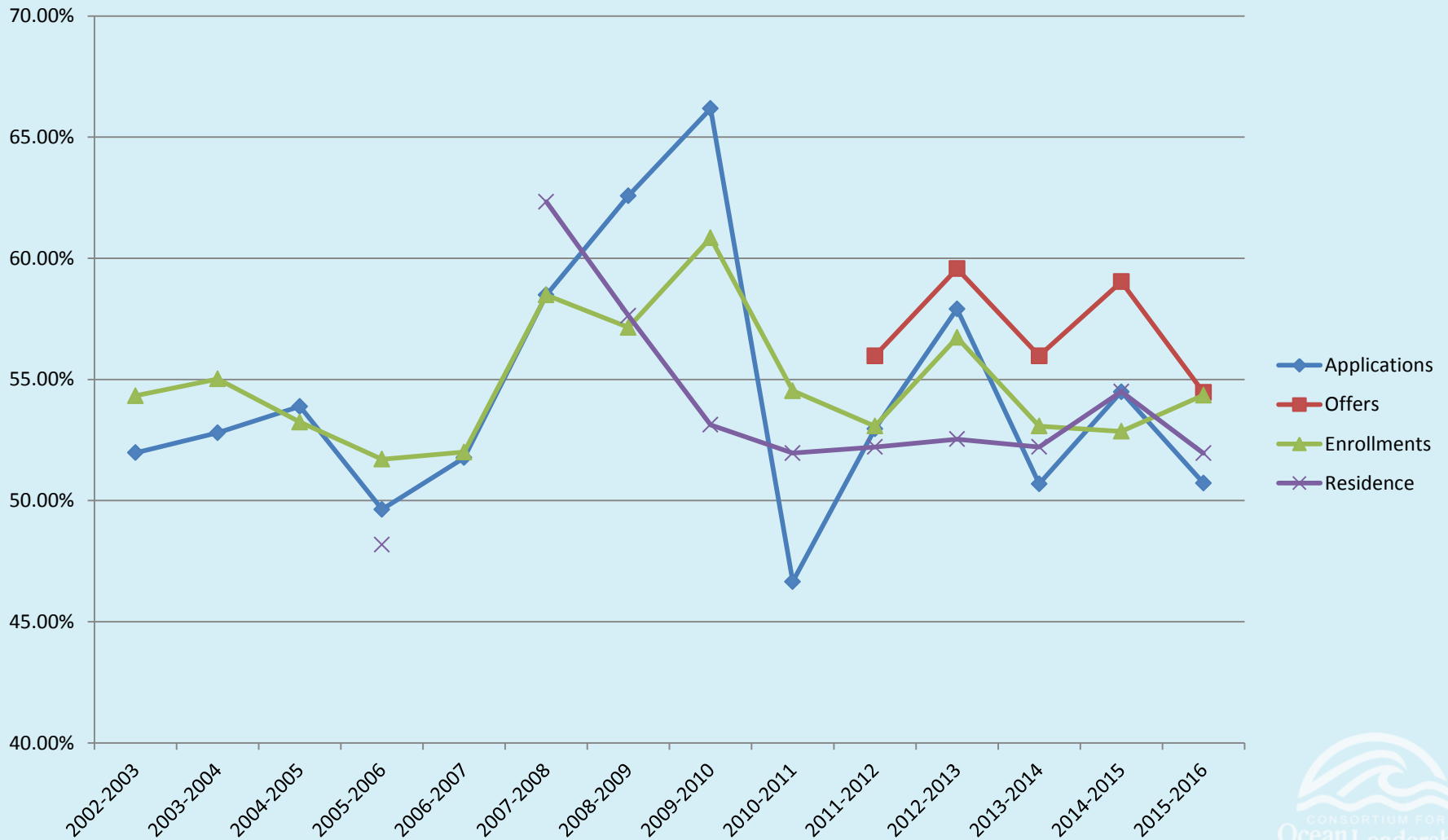
Applications/University



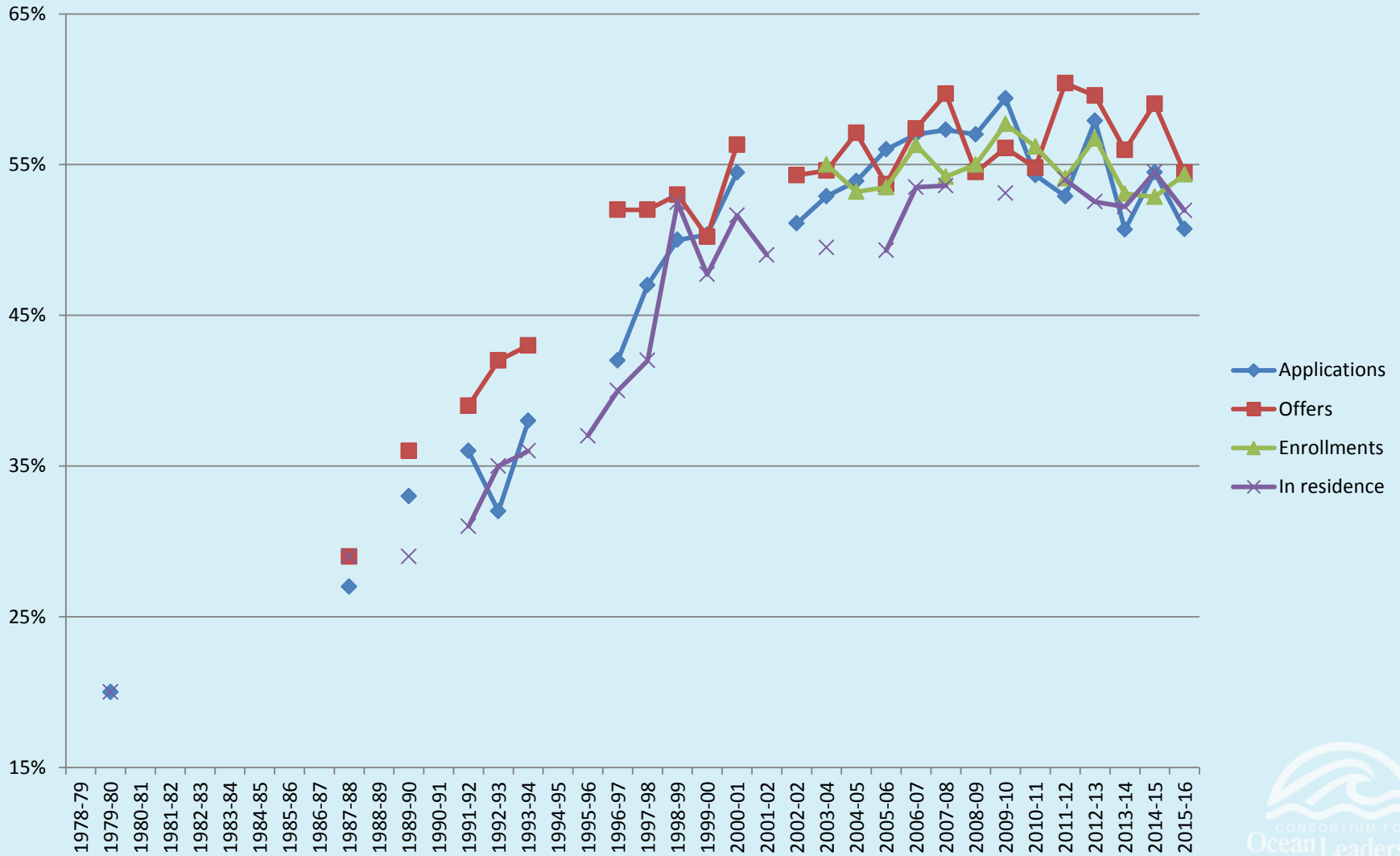
Graduate Data – Enrollments



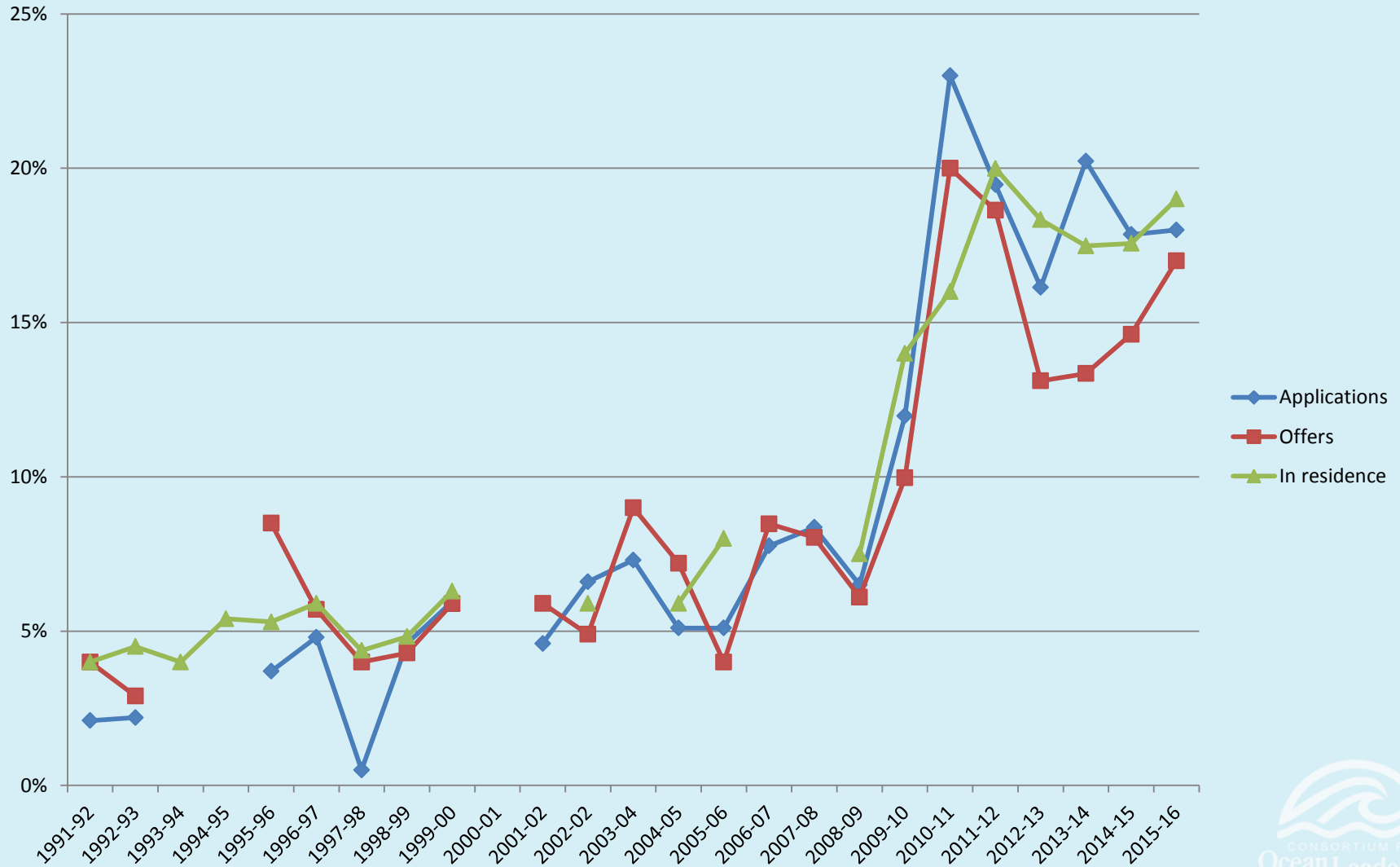
Graduate Data – Percentage of Women



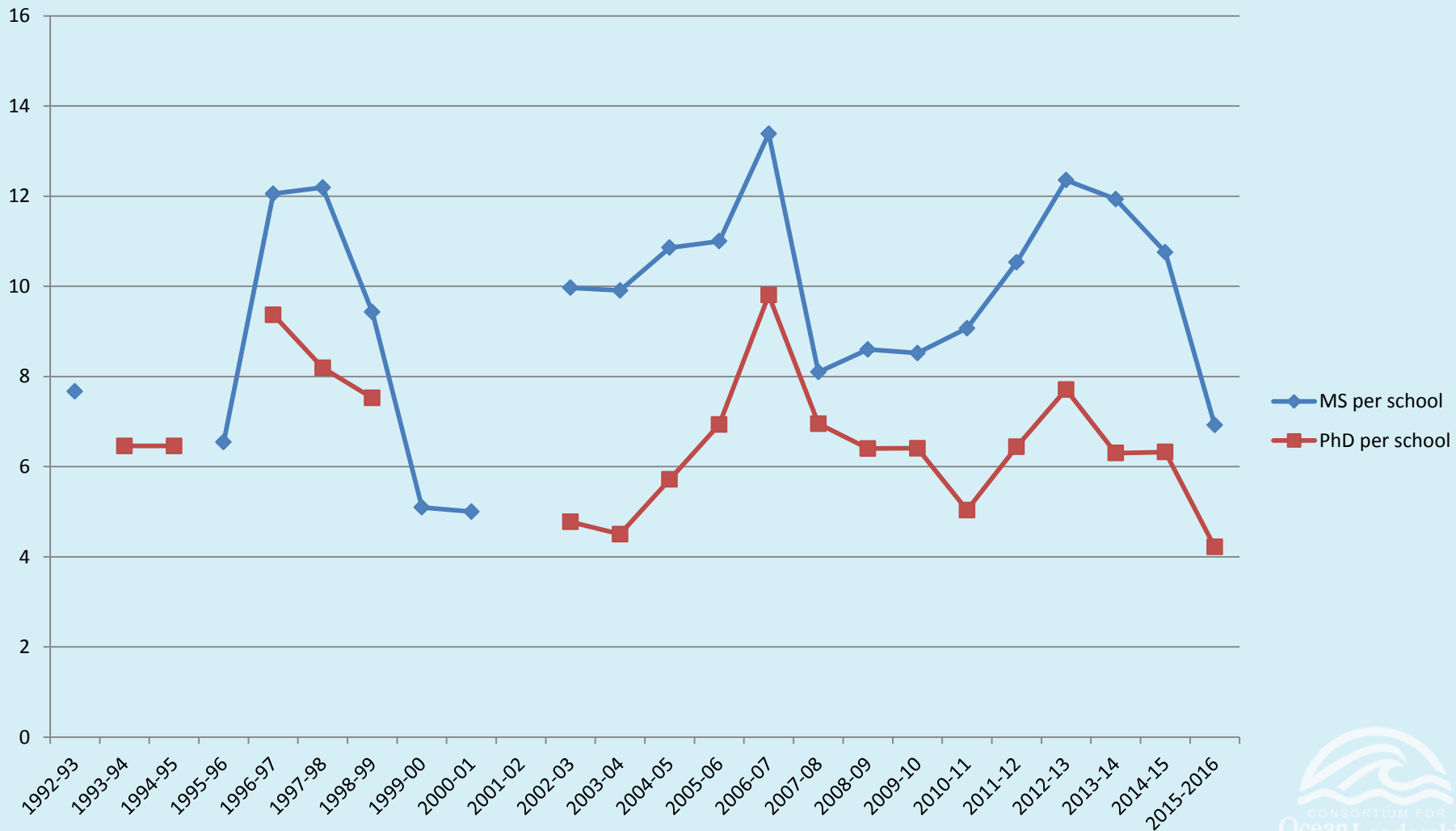
Graduate Data – Percentage of Women



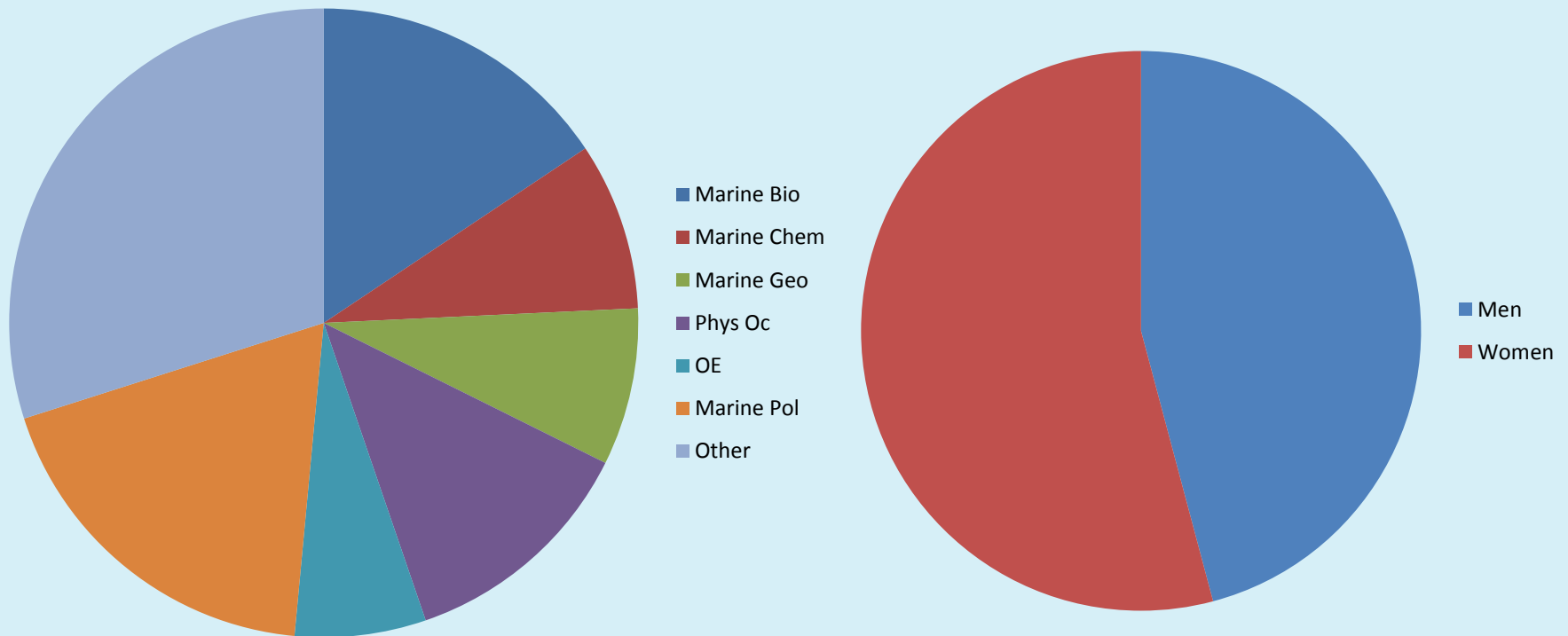
Graduate Data – Minorities



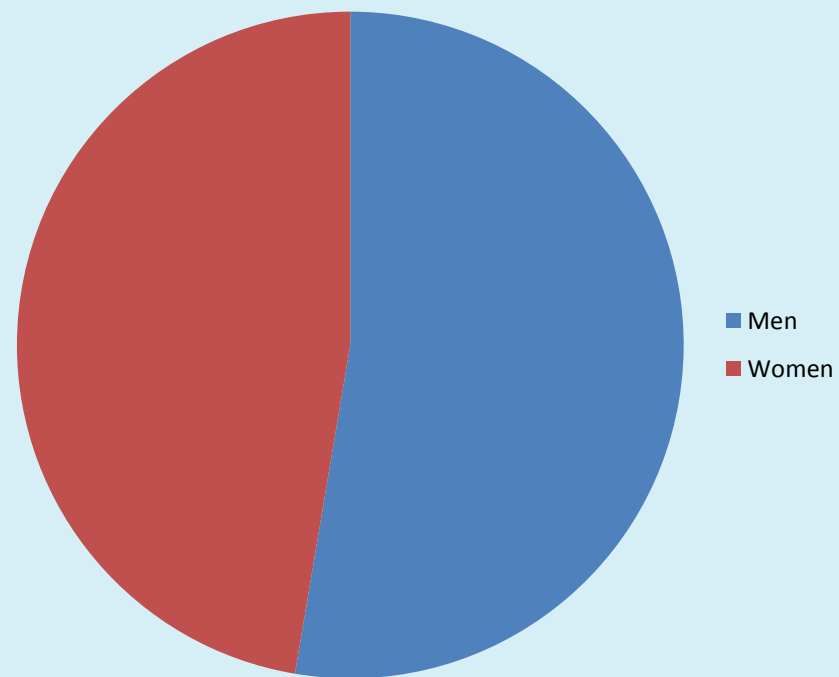
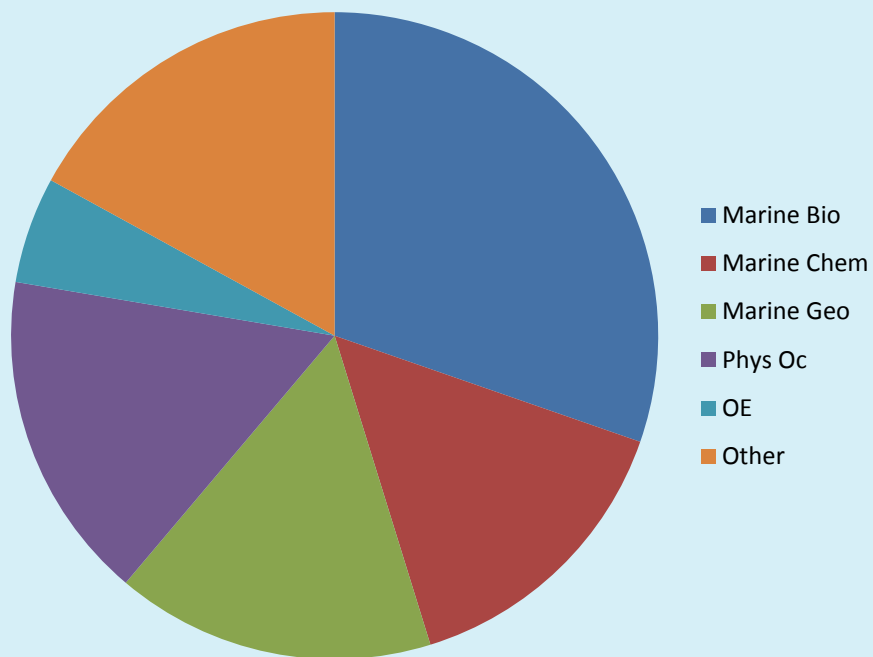
Graduate Data – Degrees Awarded



Graduate Data – Masters Awarded

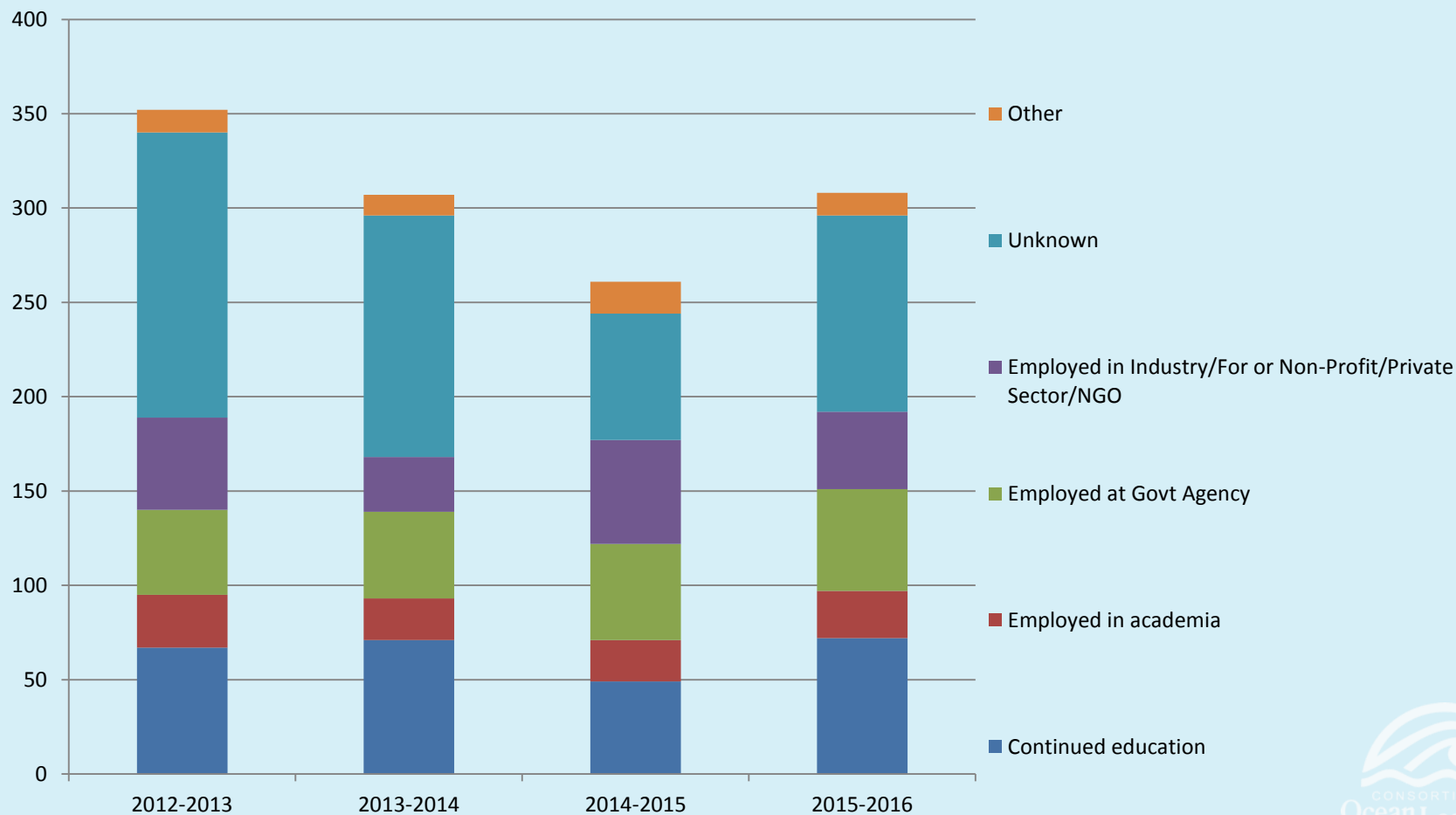


Graduate Data – PhDs Awarded



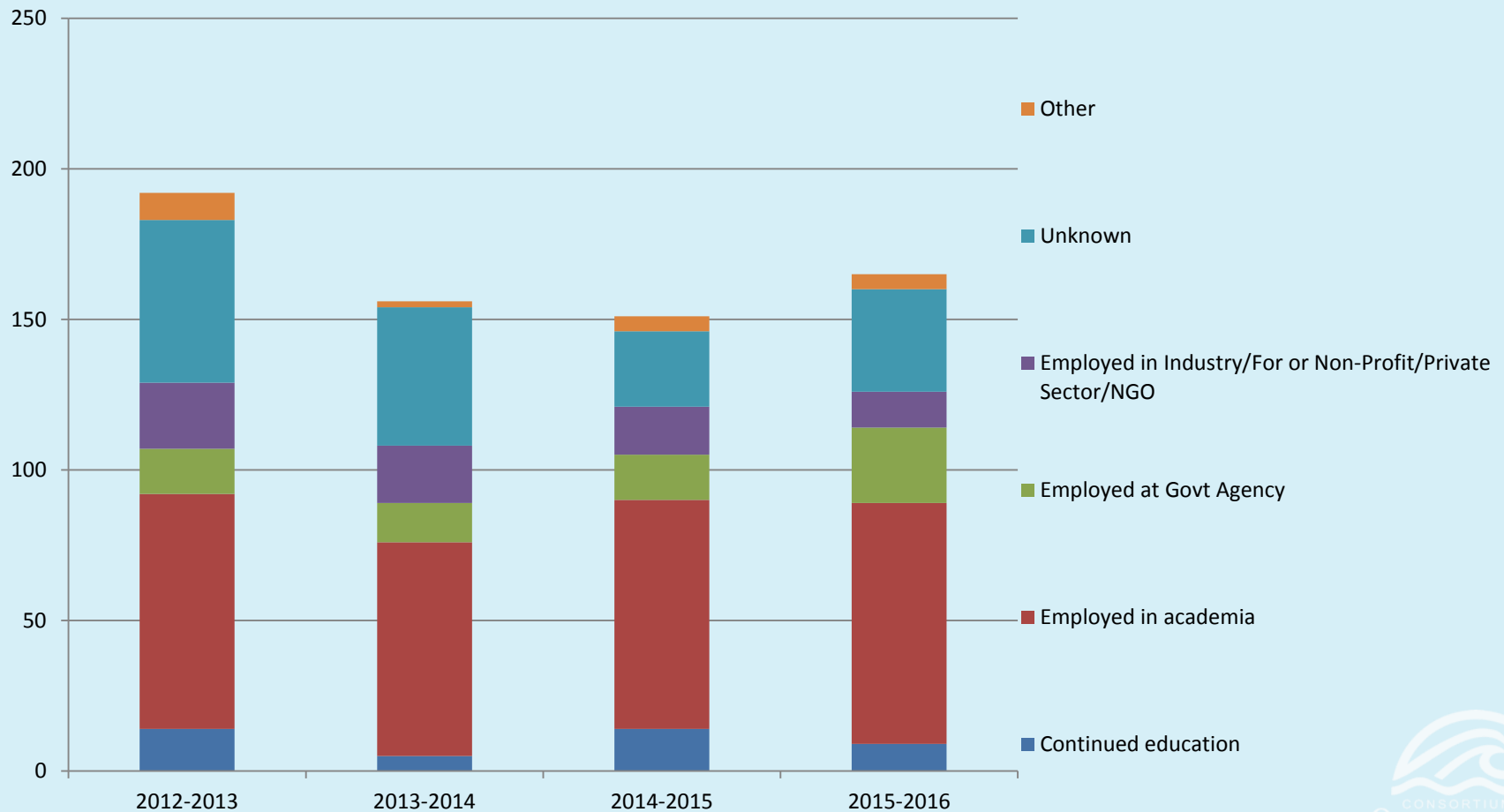
Graduate Data – Employment

US Citizen Masters recipients



Graduate Data – Employment

US Citizen PhD recipients



IPEDS Reporting

- **Core Marine Disciplines**
 - Ocean Engineering (14.2401)
 - Marine Biology and Biological Oceanography (26.1302)
 - Marine Sciences (30.3201)
 - Oceanography, Chemical and Physical (40.0607)
- **Related Disciplines**
 - Biology/Biological Sciences, General (26.0101)
 - Parks, Recreation and Leisure (31.0301)
 - Business Administration and Management, General (52.0201)
 - Natural Resources Management (3.0101, 3.0103, 3.0104, 3.0199)
 - Fishing and Fisheries Sciences and Management (03.0301)
 - Wildlife, Fish and Wildlands Science and Management (03.0601)
 - Water, Wetlands, and Marine Resources Management (03.0250)
 - Geological and Earth Sciences/Geosciences, Other (40.0699)
 - Geology/Earth Science, General (40.0601)
 - Computer and Information Sciences, General (11.0101)
 - Mechanical Engineering (14.1901)
 - Mathematics, General (27.0101)
 - Atmospheric Sciences and Meteorology, General (40.0401)
 - Zoology/Animal Biology (26.0701)
 - Multi-/Interdisciplinary Studies, Other (30.9999)

Graduate Data

Marine Bio		Marine Chem		Marine Geo		Phys O		OE		Marine Pol		Other	
Code	#	Code	#	Code	#	Code	#	Code	#	Code	#	Code	#
26.1302	8	40.0607	6	40.0607	4	40.0607	7	14.2401	3	26.1302	1	40.0607	4
30.3201	2	30.3201	2	30.3201	2	30.3201	1	26.1302	1	3.0250	2	26.1302	1
3.0250	1	26.1302	1	26.1302	2	26.1302	1	3.0250	1	11.0680	1	30.3201	2
26.0101	1	3.0250	1	3.0250	1	3.0250	1	11.0101	1	3.0101	1	3.0250	1
40.0607	3	11.0680	1	11.0680	1	11.0680	1	14.1901	1	3.0204	1	40.0401	1
11.0680	1			40.0699	1	3.0103	1	27.0101	1	31.0301	1	26.0701	1
				3.0199	1	3.0104	1	11.0680	1	52.0201	1	1.1068	1
				40.0601	1	3.0199	1					3.0301	1
												30.9990	1

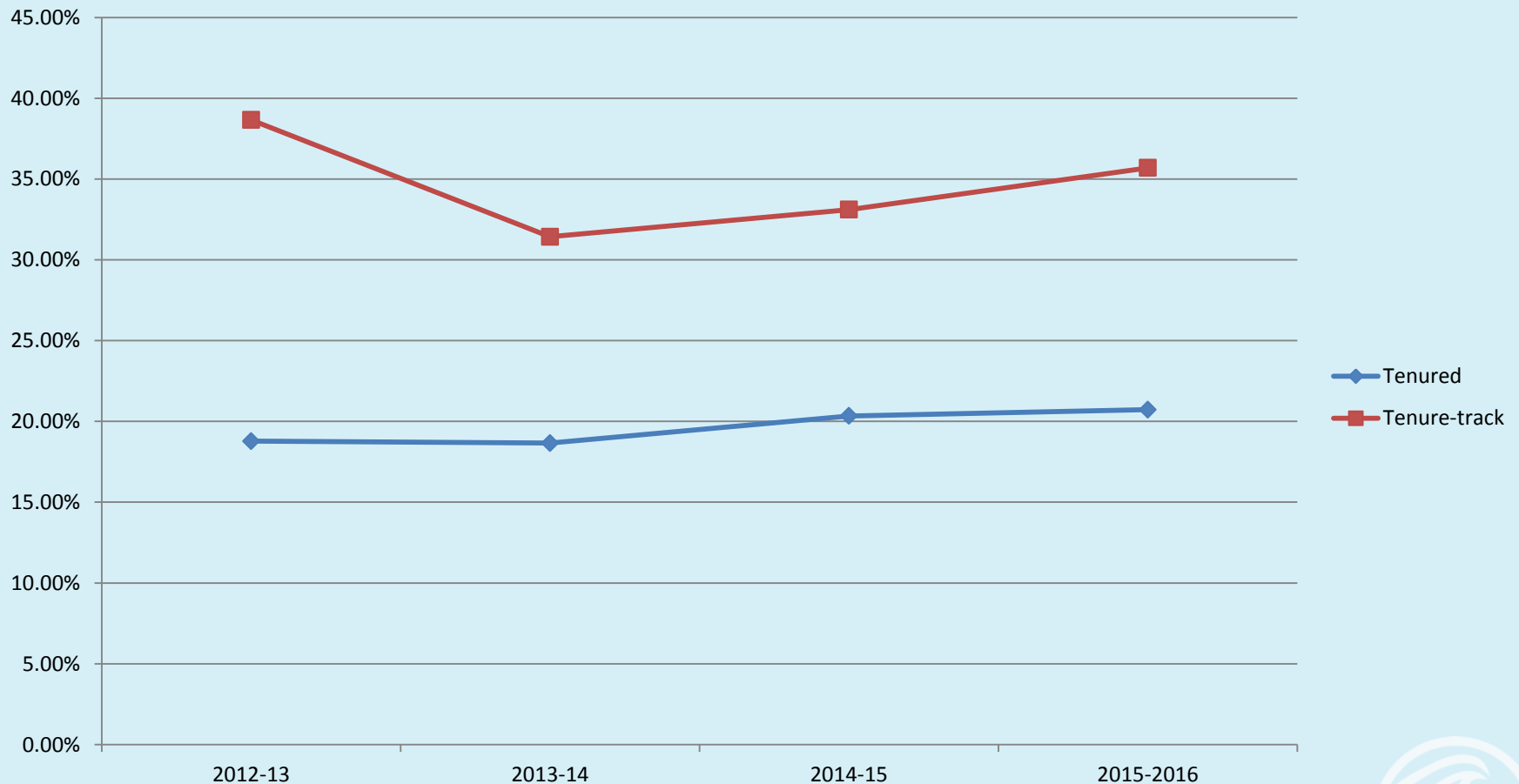
Faculty Data

- Parallel survey of faculty to graduate student results
- Time series presented based on responses from varied responding units
 - 2008 – 34
 - 2009 – 18
 - 2010 – 18
 - 2011 – 31
 - 2012 – 29
 - 2013 – 30
 - 2014 – 22
 - 2015 – 33
 - 2016 – 43

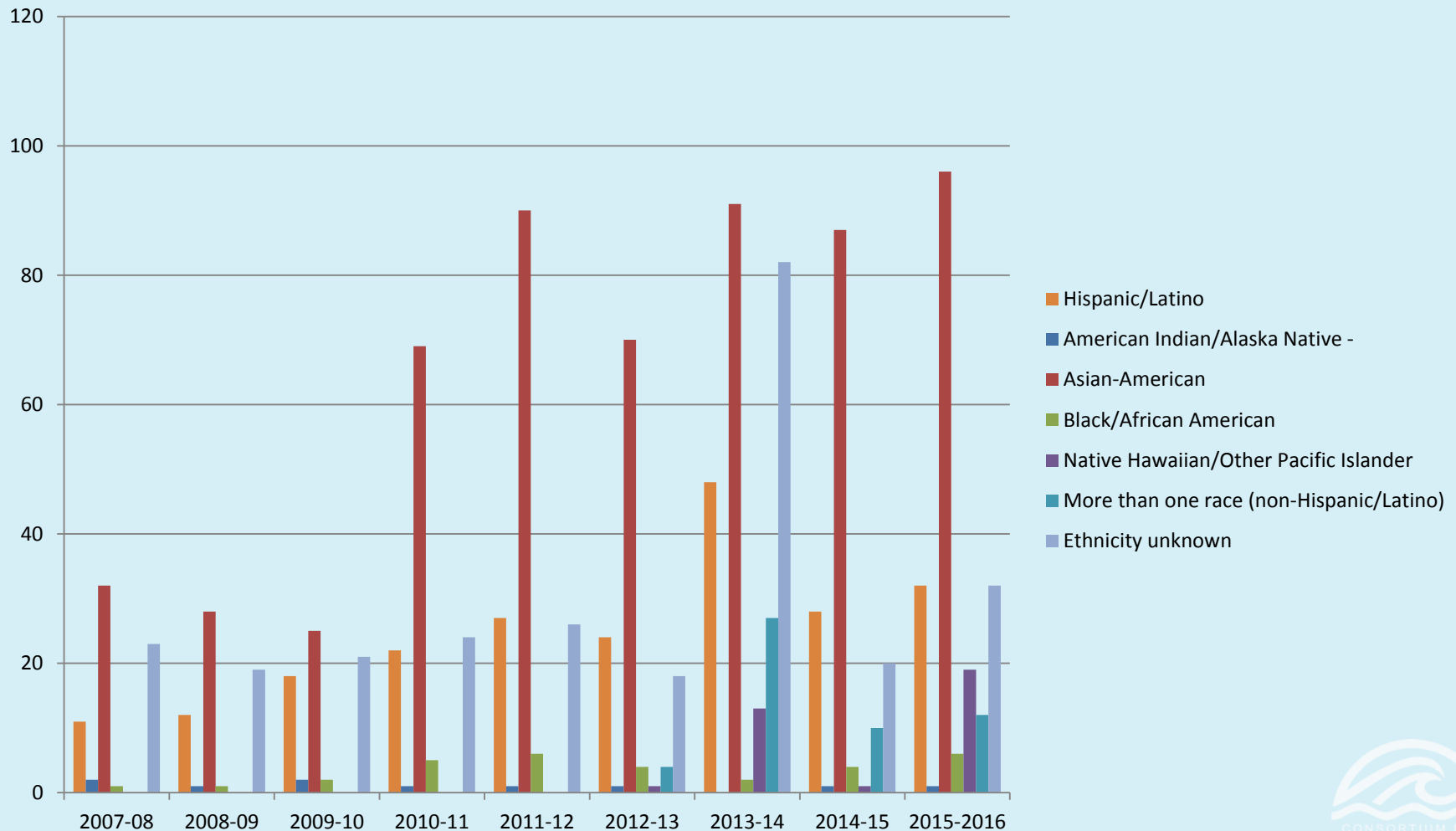
Faculty Data – Tenure & Tenure Track



Faculty Data – Percentage of Women

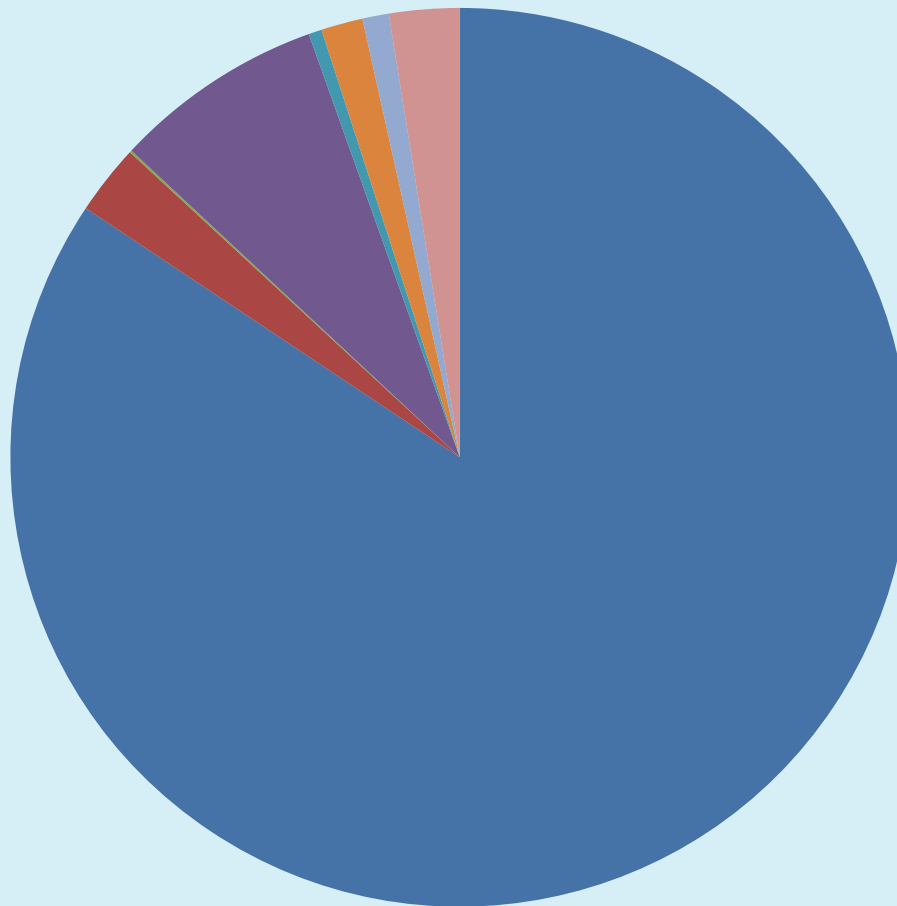


Faculty Data - Ethnicity



Faculty Data - Ethnicity

2015-2016



- White
- Hispanic/Latino
- American Indian/Alaska Native -
- Asian-American
- Black/African American
- Native Hawaiian/Other Pacific Islander
- More than one race (non-Hispanic/Latino)
- Ethnicity unknown

Questions?

